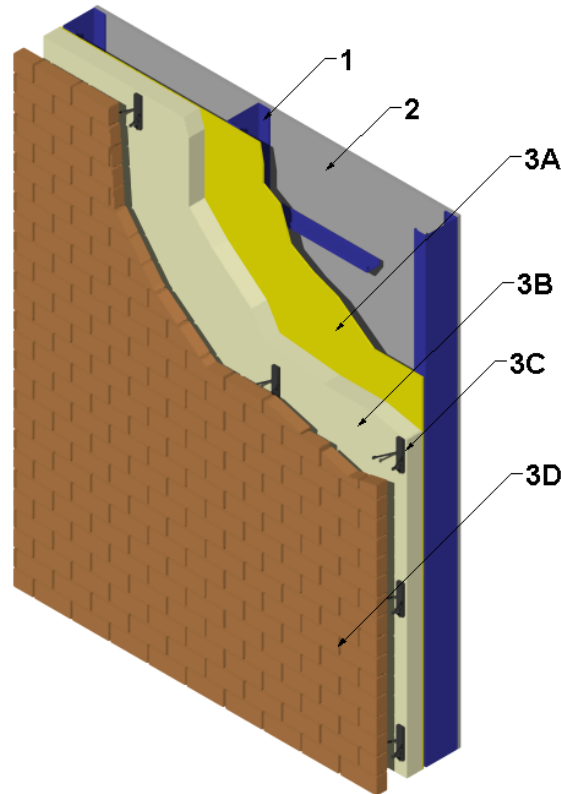


---

Gaco, a division of Holcim Solutions and Products US, LLC  
Design No. GWL/FI 30-05  
Non-Loadbearing Wall System  
GacoOnePass Low GWP F1880 and F1880W Spray-Applied Polyurethane Insulation  
NPFA 285  
Rating: Meets Conditions of Acceptance

---



**1. WALL FRAMING:** Install nominal 3-5/8 in., 20 GA galvanized steel studs spaced 24 in. on center (oc). Secure to 20 GA top and bottom track (not shown) using 7/16 in. long pan-head framing screws. Install 16 GA CRC lateral bracing perpendicular to the steel studs spaced 48 in. oc.

OPTIONAL: Install nominal 2 x 4 fire-retardant treated wood studs, complying with the definition and requirements prescribed in the International Building Code. Studs shall be spaced max. 16 in. oc.

**2. GYPSUM BOARD:** Install 5/8 in. thick Type X gypsum board, installed with long dimension perpendicular to studs. Attach to steel studs using #6, 1-1/4 in. long, zinc-plated, self-drilling bugle-head screws. Attach to wood studs using #6, 1-5/8 in. long, coarse thread, bugle-head screws or use #13, 1-5/8 in. drywall nails.

Fasteners for fire-retardant treated wood studs shall be of hot-dipped zinc-coated galvanized steel, stainless steel, silicon bronze, or copper.

Space fasteners 8 in. oc around perimeter and 12 in. oc in the field.



- A. **JOINT TAPE AND COMPOUND – (Not Shown)**  
After gypsum board is attached, apply a level 2 finish consisting of the following elements: vinyl or casein, dry or premixed, joint compound to face layers of gypsum board in two coats to all exposed screw heads and gypsum board butt joints. Embed a min. 2 in. wide paper, plastic, or fiberglass tape in first layer of compound over butt joints of the gypsum board.

**3 EXTERIOR WALL COVERING:** The exterior wall covering system shall incorporate the following construction features which are part of the wall system:

- A. **EXTERIOR SHEATHING** – Install 1/2 in. thick Georgia Pacific Densglass® Gold Exterior Sheathing with the long edge perpendicular to studs. Attach to steel studs using #6, 1-1/4 in. long, zinc-plated, self-drilling bugle-head screws. Attach to wood studs using #6, 1-5/8 in. long, coarse thread, bugle-head screws or use #13, 1-5/8 in. drywall nails.

Fasteners for fire-retardant-treated wood studs shall be of hot-dipped zinc-coated galvanized steel, stainless steel, silicon bronze, or copper.

Space fasteners 8 in. oc around perimeter and 12 in. oc in the field.

B. **INSULATION:**

**CERTIFIED PRODUCT:** GacoOnePass Low GWP F1880 or F1880W Spray Polyurethane Foam Insulation

Spray-apply nominal 4 in. of insulation at nominal density of 2.2 pcf to exterior sheathing.

- C. **ANCHORS** – Install nominal 4 in. Hohmann & Barnard X-Seal™ anchors with nominal 3 in. × 3 in. × 3/16 in. thick VB Vee Byna ties. Secure anchors through exterior wall insulation (Item 3B) and exterior sheathing to steel studs using nominal 6 in. long, zinc-coated, hex-head screws spaced nominally 24 in. oc. Use self-drilling screws for steel studs and wood screws for fire-retardant treated wood studs.

- D. **BRICK** – Install nominal 4 in. red clay brick (3-5/8 in. × 2-1/4 in. × 7-5/8 in.) laid in a running bond pattern. Use Type S masonry cement, leaving a max. 2 in. air gap between the brick and the exterior wall insulation (Item 3B).

4. **OPENINGS (Not Shown):** Openings must be protected with 20 GA steel framing.

5. **FLOORLINE STOPPING (Not Shown):** Install 4 in. thick, 4.0 pcf mineral wool in the stud cavity at the floorlines.

Consult the listing report on the Directory of Building Products (<https://bpdirectory.intertek.com>) for the edition of the standard(s) evaluated.

*Compliance of the assembly described in this Design Listing with the referenced standard relies on verification that the assembly constructed in the field is consistent with that described herein. Intertek certified products may be verified by the approved Intertek label; other products must be verified by the Authority Having Jurisdiction as meeting the specifications stated herein.*