

All Weather Insulated Panels
Design No. AWIP/FWPA 25-03
Vertical Symmetrical Wall Assembly
AWIP fiRe Panel Wall Assembly
CAN/ULC S134
Rating: Meets Conditions of Acceptance

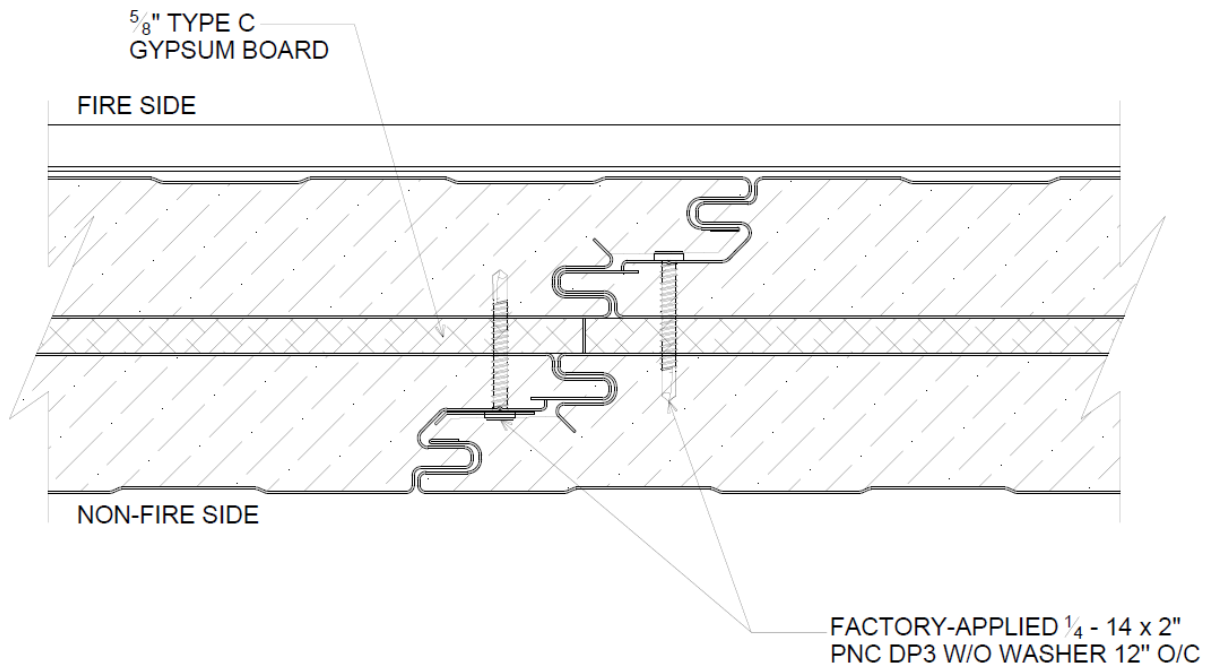


Figure 1 - Joint Profile

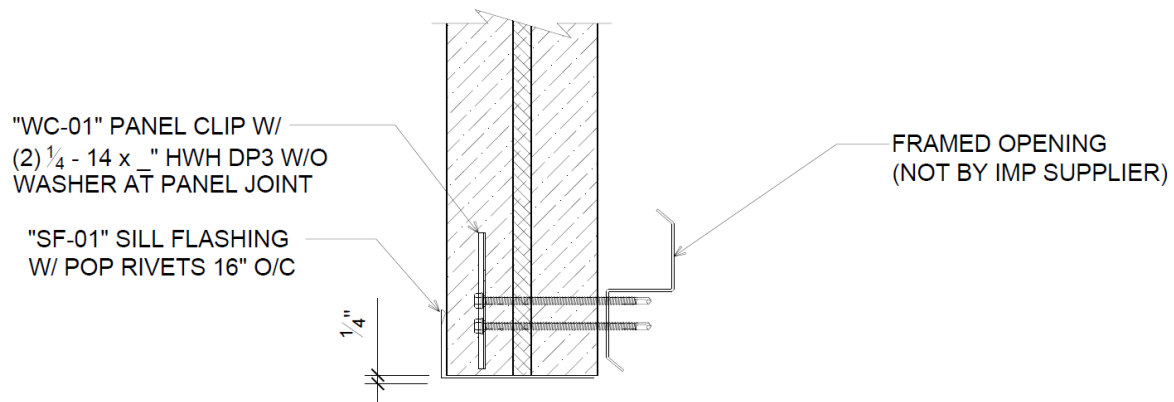


Figure 2A - Framed Opening Header

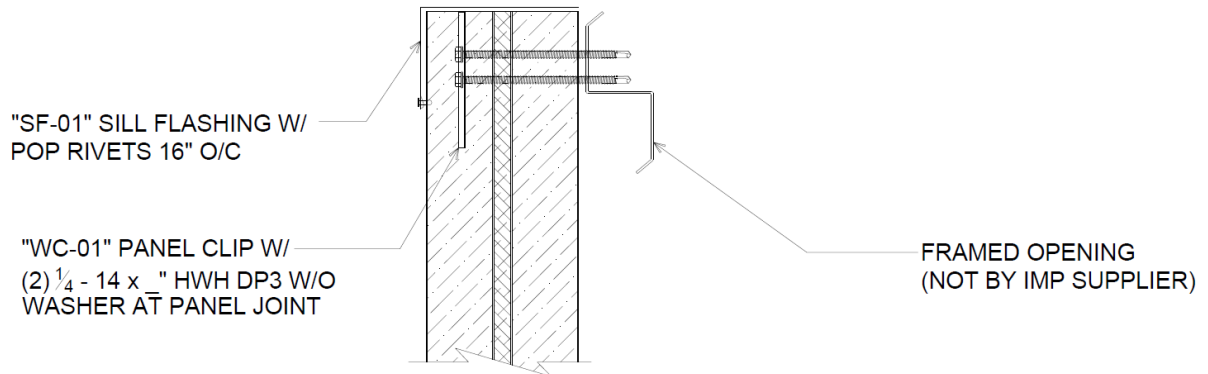


Figure 2B - Framed Opening Sill

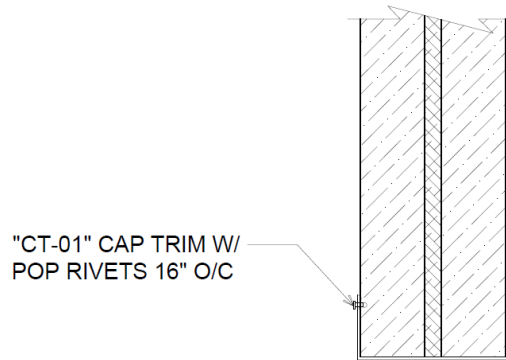


Figure 2C - Framed Opening Jamb

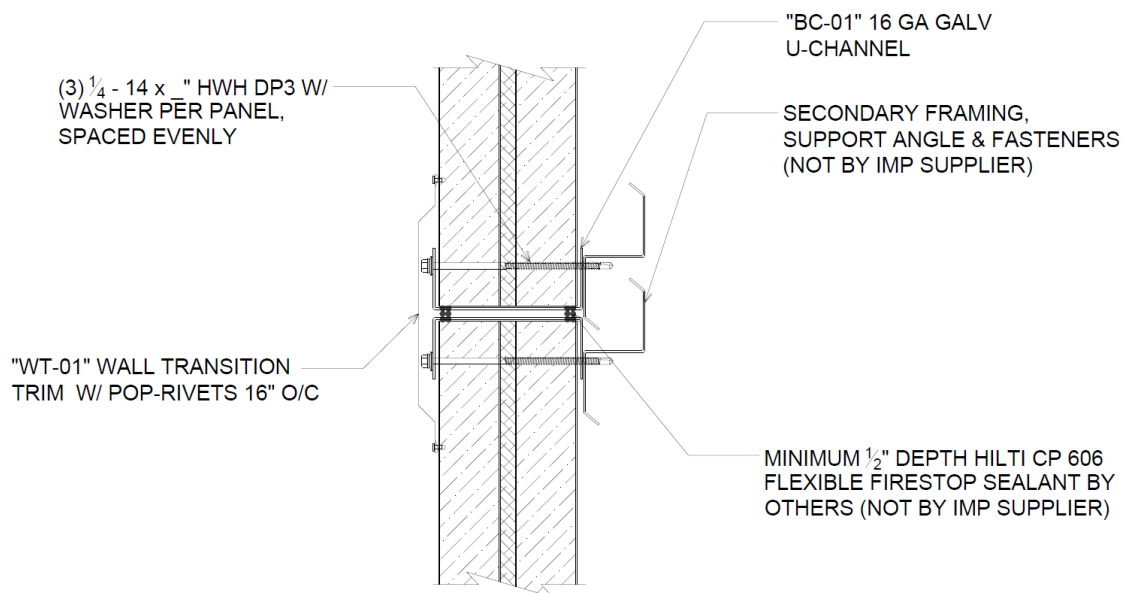


Figure 2D - Stack Joint

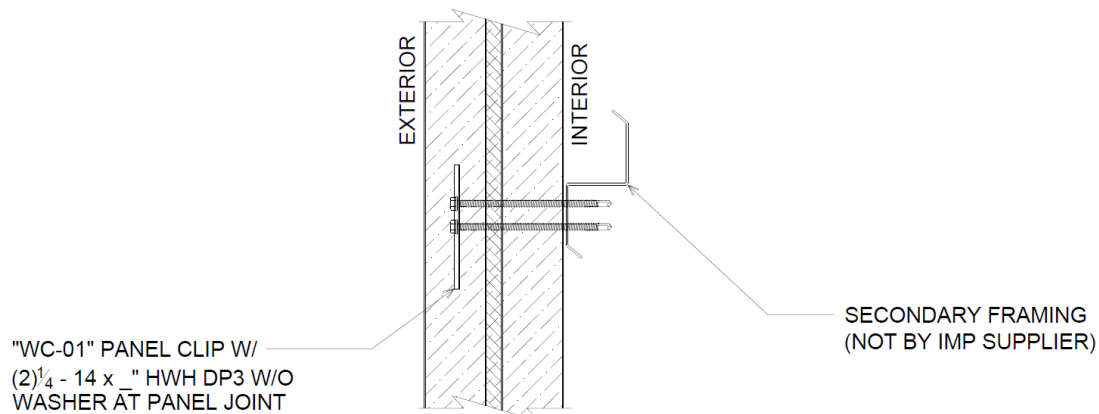


Figure 2E - Intermediate Wall Fastening

1. **SUPPORTING WALL CONSTRUCTION:** The supporting wall must be constructed per the applicable Building Code requirements for noncombustible construction.

2. **INSULATED PANELS:**

CERTIFIED PRODUCT: All Weather Insulated fiRe Panel models DM40-F, FL40-F, HE40-F, HE40A-F, ST40-F, MV40-F, and FW40-F. These are 40 in. wide, max. 6 in. thick, insulated metal panels with panel facings of min. 26 GA Grade 33 steel, ASTM A653 G90 or ASTM A792 AZ50 coated, and a core of medium density polyisocyanurate rigid foam.

Panels are installed vertically to the exterior side of the supporting wall with min. conditions as follows: 2 in. x 2 in. x 2 in., No. 26 GA Z-girts are attached horizontally to the supporting wall, spaced as required by the design but no greater than 92 in. on center (oc). The panels are attached with clips, shown in Figure 2A, attached through the panel joints to the Z-girts with TEK 3, TEK 4, or TEK 5 fasteners (1/4-14

diameter; length varies per panel thickness). Stacked joints are assembled as shown in Figure 2D. Panel terminations are held in place with cap trim using pop rivets every 12 in. oc. Use 6 in. wide 26 GA CT-01 Cap Trim, 8 in. x 3 in. 26 GA SF-01 Sill Trim, 2 in. 26 GA BT-04 Fascia Trim, and 6 in. 26 GA BF-01 Zee Flashing, according to the requirements of the design. Trim components are provided by AWIP. See Figures 2A through 2E for typical details.

3. **OPENINGS:** Fasten No. 26 GA steel sill flashing around the perimeter of the opening using pop rivets every 16 in. oc. See Figures 2A, 2B, and 2C for details.

4. **EXTERIOR METAL CLADDING (Optional, Not Shown):** Single-skin steel cladding shall be installed over the All Weather Insulated Panels. The cladding may be fastened to the AWIP panels directly or to horizontal tracks that are attached to the panel. Attachment details must be in accordance with the design specification.



Consult the listing report on the Directory of Building Products (<https://bpdirectory.intertek.com>) for the edition of the standard(s) evaluated.

Compliance of the assembly described in this Design Listing with the referenced standard relies on verification that the assembly constructed in the field is consistent with that described herein. Intertek certified products may be verified by the approved Intertek label; other products must be verified by the Authority Having Jurisdiction as meeting the specifications stated herein.