

All Weather Insulated Panels
Design No. AWIP/FWPA 30-03
Vertical & Horizontal Symmetrical Wall Assembly
AWIP fiRe Panel Wall Assembly
NFPA 285
Rating: Meets Conditions of Acceptance

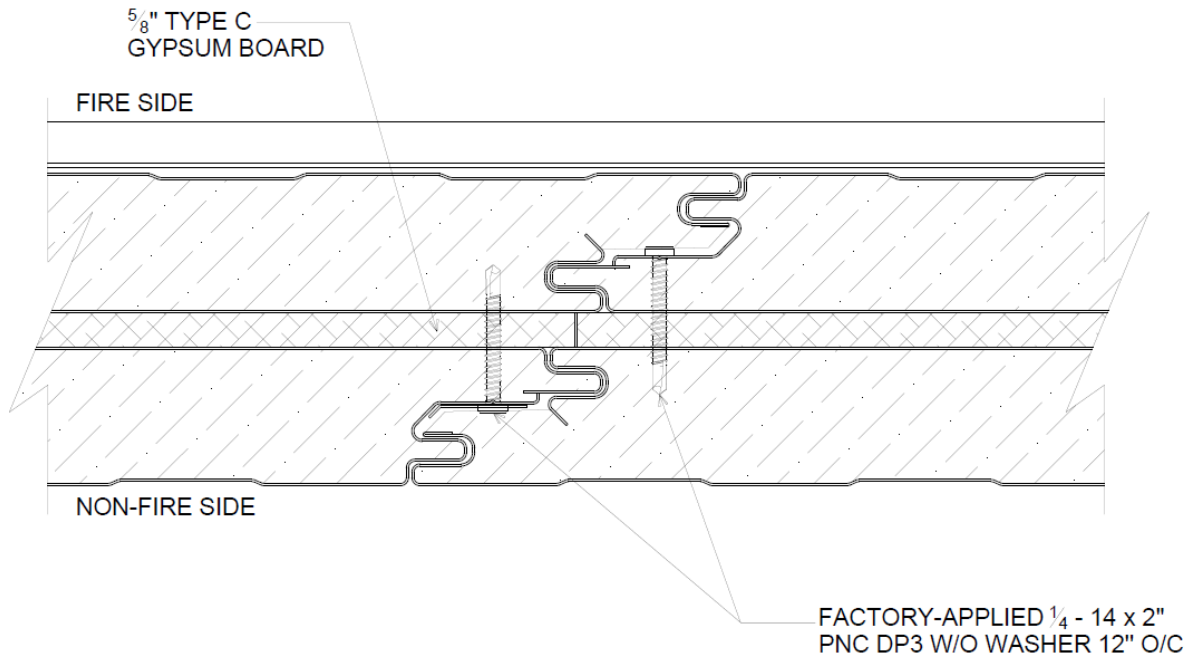


Figure 1 – Joint Profile

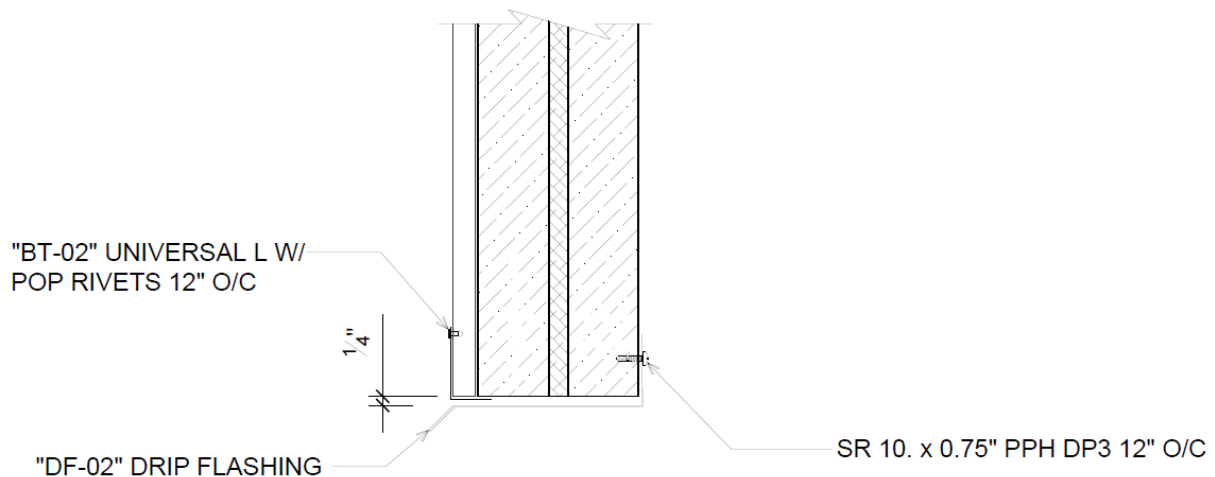
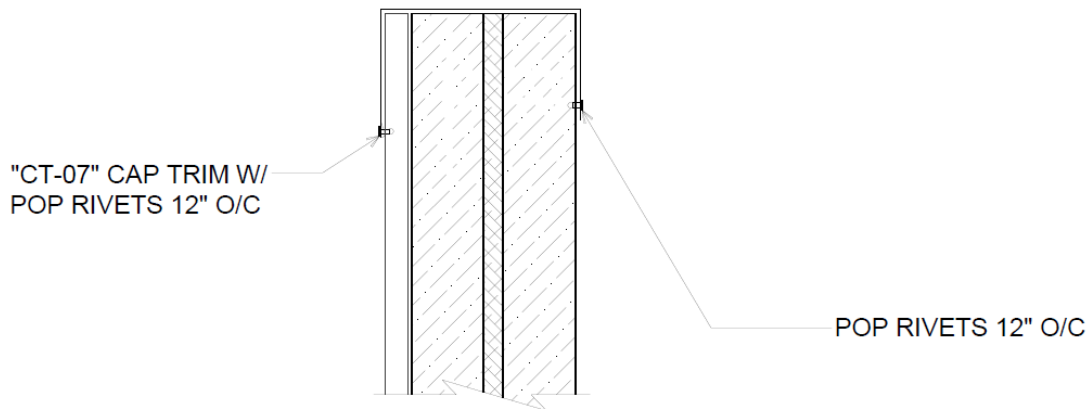
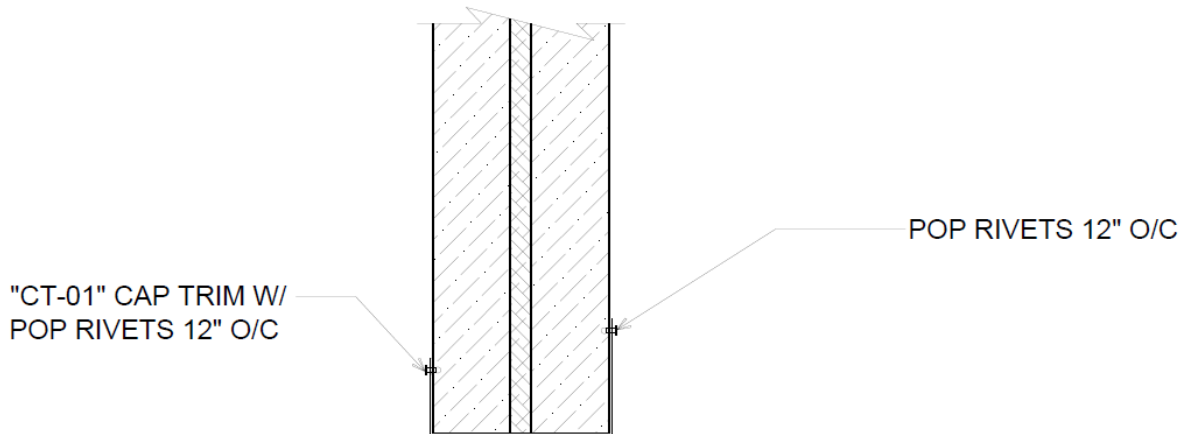


Figure 2A – Framed Opening Header

**Figure 2B – Framed Opening Sill****Figure 2C – Framed Opening Jamb****1. INSULATED PANELS:**

CERTIFIED PRODUCT: All Weather Insulated fiRe Panel models DM40-F, FL40-F, HE40-F, HE40A-F, ST40-F, MV40-F, and FW40-F.

The 40 in. wide insulated metal panels have panel facings of min. 26 GA Grade 33 steel, ASTM A653 G90 or ASTM A792 AZ50 coated, and a core of medium density polyisocyanurate rigid foam.

Panels may be installed horizontally or vertically to the exterior side of steel framing. Install panels to steel framing members spaced a max. of 92 in. on center (oc) using TEK 3, TEK 4, or TEK 5 fasteners (1/4-14 diameter; length varies per panel thickness). The panels are held in place at the top, bottom, and sides by 26 GA steel cap trims along the wall perimeters. The panels are fastened to the cap sheet using pop rivets every 12 in. oc.

JOINTS AND SEAMS – See joint profile shown above in Figure 1.



2. **OPENING:** Fasten steel drip flashing and trim around the perimeter for the opening using pop rivets every 12 in. oc. See Figures 2A, 2B, and 2C for details.
3. **EXTERIOR METAL CLADDING (Optional, Not Shown):** Single-skin steel cladding shall be installed over the All Weather Insulated Panels.

The cladding may be fastened to the AWIP panels directly or to horizontal tracks that are attached to the panel. Attachment details must be in accordance with the design specification.

4. **FLOORLINE FIRESTOPPING (Not Shown):** Min. 4 pcf mineral wool in each stud cavity at each floorline attached with Z-clips or equivalent.

Consult the listing report on the Directory of Building Products (<https://bpdirectory.intertek.com>) for the edition of the standard(s) evaluated.

Compliance of the assembly described in this Design Listing with the referenced standard relies on verification that the assembly constructed in the field is consistent with that described herein. Intertek certified products may be verified by the approved Intertek label; other products must be verified by the Authority Having Jurisdiction as meeting the specifications stated herein.