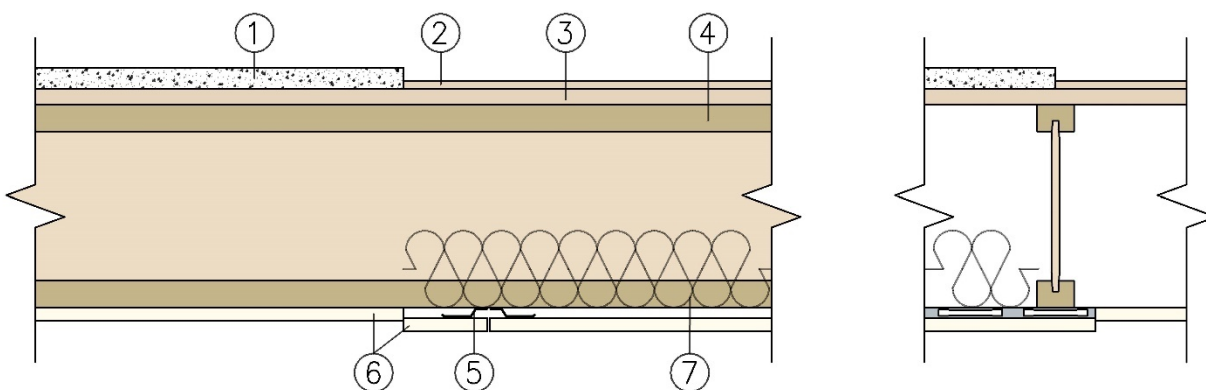


**Weyerhaeuser NR Company**  
**Design No. WNR/FCA 45-01**  
**Wood I-Joists**  
**TJI® Joists**  
**ASTM E119, CAN/ULC S101**  
**Rating: 3/4 Hour**

**STC 50 with Insulation and Resilient Channels, STC 57 with Min. 1-1/2 in. of Topping and Resilient Channels**



**1. TOPPING (Optional):** Lightweight concrete or proprietary topping.

**2. FLOORING (Optional):** 3/8 in. wood panel sheathing.

**3. SUB-FLOORING:** Minimum 23/32 in. tongue and groove plywood or oriented strand board (OSB) designed and installed per Code requirements. Alternate 5/8 in. tongue and groove plywood or OSB when optional Topping or Flooring is used.

**4. STRUCURAL MEMBERS:** Wood I-Joists

A. **CERTIFIED PRODUCT:** Weyerhaeuser NR Company: TJI® Series Joists TJI 110, TJI 210, TJI 230, TJI 360, TJI 560, TJI 560D.

Minimum depth: 9-1/2 in. Maximum spacing: 24 in. on center (oc).

B. Code Compliant Weyerhaeuser Timberstand LSL, Microllam LVL, or Parallam PSL Certified to ASTM D5456:

Minimum thickness: 1.5 in. Minimum depth: 9-1/2 in. Maximum spacing: 24 in. oc.

**5. STEEL FURRING CHANNELS (Optional):** 0.019 in. or thicker galvanized steel resilient channels, maximum spacing 24 in. oc, fastened to each joist with one 1-1/4 in. Type W screw. For the attachment of gypsum board end joints, additional channels are placed such that each board end is supported by its own channel. These additional channels extend to the next joist on each side of the board edges.

**6. GYPSUM BOARD:** One layer of 5/8 in. Type X. Maximum board width is 48 in. Joints to be taped and filled. Screw heads to be filled.



Application to Joists: Applied to joists with long edge perpendicular to joists and with end joints butted over joists. Adjacent end joints staggered minimum 24 in. Attached with minimum 1-5/8 in. Type W screws spaced 12 in. oc on intermediate supports and 6 in. oc at end supports.

Application to Channels: Applied to furring channels with long edge perpendicular to channels and located midway between joists. End joints staggered. Gypsum board fastened to channels with 1 in. Type S screws with two rows located 3/4 in. and

6 in. away from long edge and the remainder spaced 12 in. oc along channel. Screws located 1-1/2 in. from end joints.

**7. FIBERGLASS BATT INSULATION (Optional, permitted only when resilient channels are used):** 3-1/2 in. thickness, friction fit between flanges.

*Consult the listing report on the Directory of Building Products (<https://bpdirectory.intertek.com>) for the edition of the standard(s) evaluated.*

*Compliance of the assembly described in this Design Listing with the referenced standard relies on verification that the assembly constructed in the field is consistent with that described herein. Intertek certified products may be verified by the approved Intertek label; other products must be verified by the Authority Having Jurisdiction as meeting the specifications stated herein.*