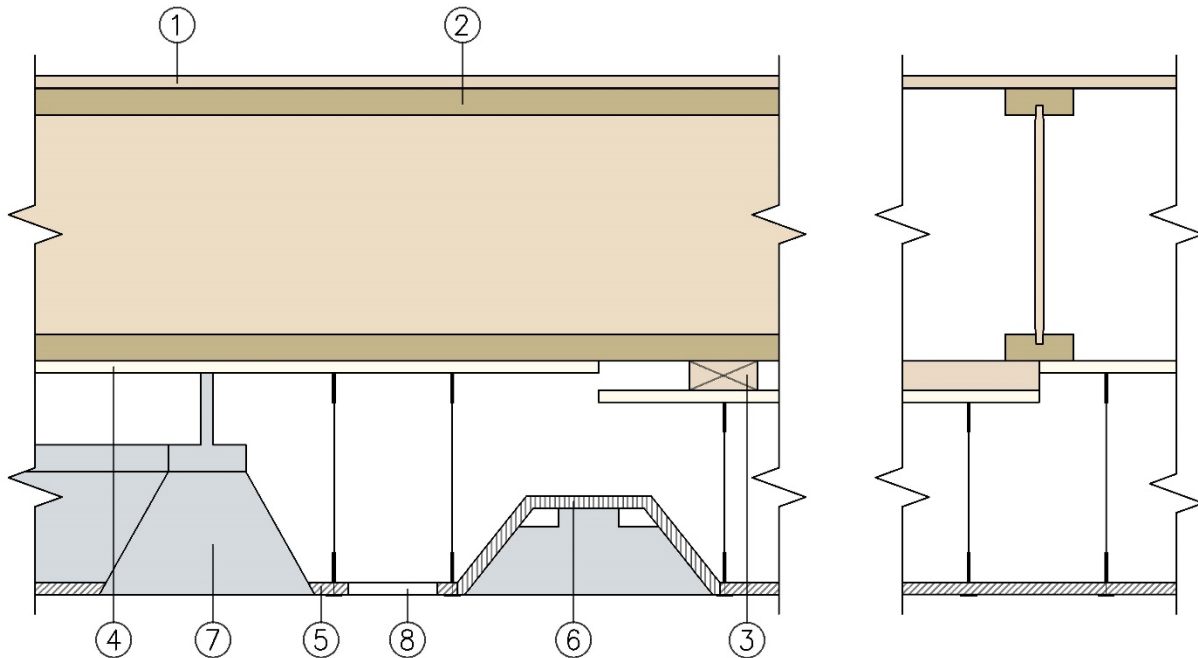


Weyerhaeuser NR Company
Design No. WNR/FCA 60-08
Wood I-Joists
TJI® Joists
ASTM E119, CAN/ULC S101
Rating: 1 Hour



1. SUB-FLOORING: Min. 3/4 in. thick plywood or OSB when TJI Joist spacing is max. 48 in. on center (oc) and min. 5/8 in. thick when TJI Joist spacing is a max. of 20 in. oc.

2. STRUCTURAL MEMBERS: Wood I-Joists

A. **CERTIFIED PRODUCT:** Weyerhaeuser NR Company: TJI® Series Joists: TJI 560, TJI 560D.

Minimum depth: 14 in. Maximum spacing: 48 in. oc.

B. Code Compliant Weyerhaeuser Timberstand LSL, Microllam LVL, or Parallam PSL Certified to ASTM D5456:

Minimum thickness: 1.5 in. Minimum depth: 14 in. Maximum spacing: 48 in. oc.

3. WOOD FURRING (Optional): 2 x 4 minimum Standard & Better grade, placed perpendicular to joists, spaced maximum 24 in. oc, and attached to each joist with one minimum 3 in. Type W screw Required when joist spacing exceeds 24 in. oc.



- 4. GYPSUM BOARD:** One layer minimum 1/2 in. Type X. Maximum board width is 48 in. Taping and finishing only of joints required.

Applied to joists with long edge perpendicular to joists and with end joints butted over joists. Adjacent end joints staggered minimum 24 in. Attached with Type W screws spaced 12 in. oc on intermediate supports and 6 in. oc at end supports. Screws must penetrate a minimum of 1 in. into wood member.

- 5. CEILING SYSTEM:** Suitable fire rated suspended ceiling system located a min. distance of 12 in. below the gypsum board. The grid system is suspended with No. 12 SWG galvanized steel wire fastened to the joists or wood furring with 1-1/2 in. long flat-head hanger screws. Acoustical ceiling panels are 24 in. x 48 in. x 5/8 in., rated for use as a component in an equivalent fire-resistant assembly, with a min. finish rating of 15 minutes. Hold down clips are required for acoustical ceiling panels weighing less than 1 psf.

- 6. FIXTURE PROTECTION:** Suitable flush mounted fire rated fluorescent fixtures up to 24 in. x 48 in. x up to 5 in. deep, protected by a five-sided box with up to 6 in. wide pieces of ceiling panels, 48 in. long for the sides and 24 in. long for the ends, and a full grid panel placed on top. Top panel spaced to allow min. 1 in. air space from top of fixture. Assemble panels with 3 in. nails spaced 6 in. oc. strips of panel 6 in. wide over joints of light fixture boxes when two fixtures are butted end to end. Aggregate area of fixture not to exceed 10 sq.ft. per 215 sq.ft. ceiling.
- 7. DUCT:** 4 in. x 18 in. galvanized steel duct with a max. 12 in. diameter steel diffusion opening and spaced at least 84 in. apart.
- 8. RETURN OPENING:** A max. 6 in. x 12 in. return air opening permitted for each 215 sq.ft. of ceiling and spaced at least 84 in. apart.

Consult the listing report on the Directory of Building Products (<https://bpdirectory.intertek.com>) for the edition of the standard(s) evaluated.

Compliance of the assembly described in this Design Listing with the referenced standard relies on verification that the assembly constructed in the field is consistent with that described herein. Intertek certified products may be verified by the approved Intertek label; other products must be verified by the Authority Having Jurisdiction as meeting the specifications stated herein.