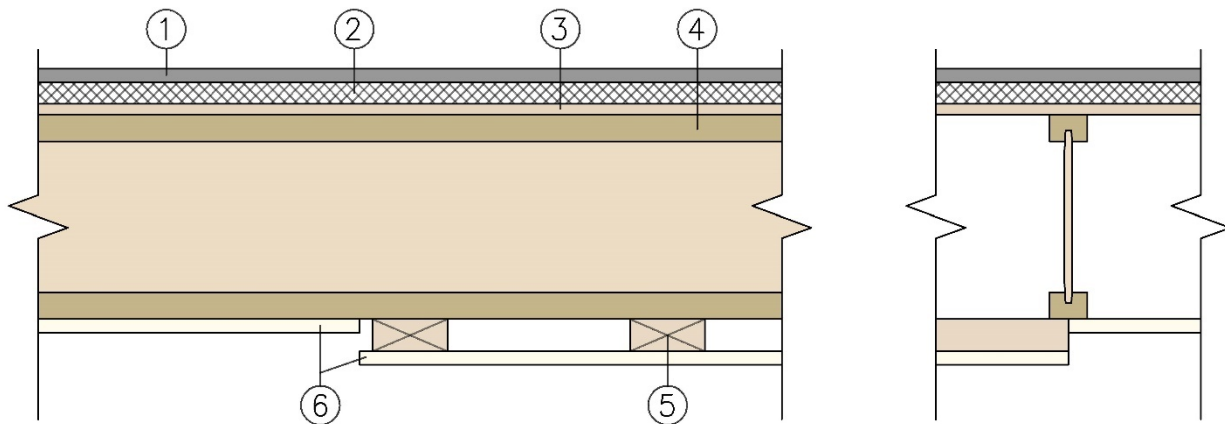


Weyerhaeuser NR Company
Design No. WNR/RCA 45-01
Wood I-Joists
TJI® Joists
ASMT E119, CAN/ULC S101
Rating: 45 minutes Roof /Ceiling Assembly



1. Roof Covering: Suitable materials intended for built-up roof covering which provides Class A, B, C covering on combustible wood decks for fire resistant assemblies equivalent to this roof-ceiling/assembly.

2. Roof Insulation: Sheathing material and adhesive products found suitable for use in 3/4 hour rated fire assemblies equivalent to this roof/ceiling assembly.

3. Sheathing: Minimum 15/32 in. square edge plywood or oriented strand board (OSB) sheathing designed and installed per Code requirements, H clips midway between joists or as per code requirements.

4. STRUCTURAL MEMBERS: Wood I-Joists

A. **CERTIFIED PRODUCT:** Weyerhaeuser NR Company: TJI® Series Joists: TJI 110, TJI 210, TJI 230, TJI 360, TJI 560, TJI 560D.

Minimum depth: 9-1/2 in. Maximum spacing: 48 in. oc.

B. Code Compliant Weyerhaeuser Timberstand LSL, Microllam LVL, or Parallam PSL Certified to ASTM D5456:

Minimum thickness: 1.5 in. Minimum depth: 9-1/2 in. Maximum spacing: 48 in. oc.

5. Wood Furring (Optional): 2 x 4 lumber, minimum Standard & Better grade, placed perpendicular to joists and spaced maximum 24 in. oc, attached to each joist with one minimum 3 in. Type W screw. Required when joists spacing exceeds 24 in. oc.

6. Gypsum Board: One layer of 5/8 in. Type X gypsum. Maximum board width is 48 in. Joints to be taped and filled. Screw heads to be filled.

Applied to joists or furring with long edge perpendicular to supports and with end joints butted over supports. Adjacent end joints



staggered minimum 24 in. Attached with minimum 1-5/8 in. Type W screws spaced 12 in. oc on intermediate supports and 6 in. oc at end supports.

Consult the listing report on the Directory of Building Products (<https://bpdirectory.intertek.com>) for the edition of the standard(s) evaluated.

Compliance of the assembly described in this Design Listing with the referenced standard relies on verification that the assembly constructed in the field is consistent with that described herein. Intertek certified products may be verified by the approved Intertek label; other products must be verified by the Authority Having Jurisdiction as meeting the specifications stated herein.