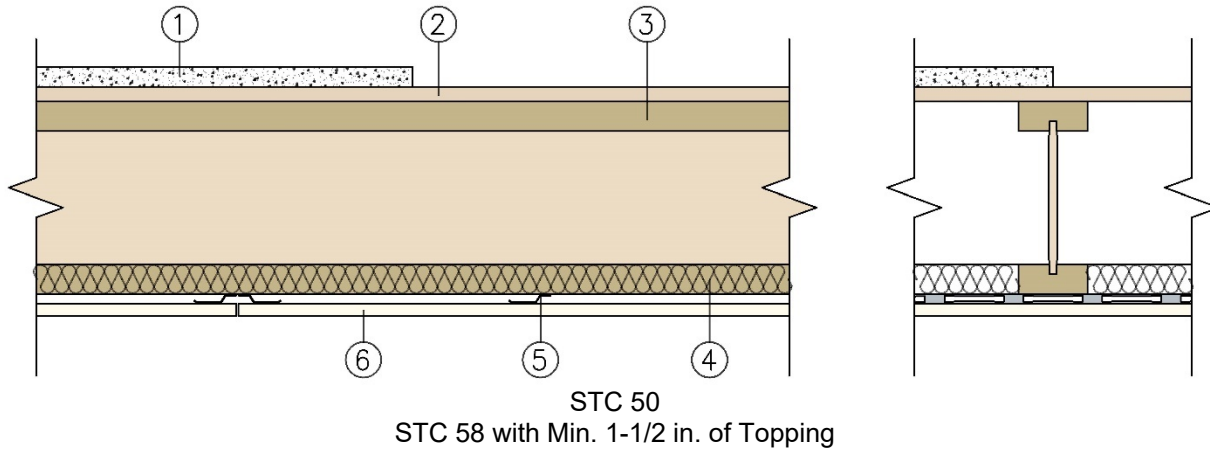


Weyerhaeuser NR Company
Design No. WNR/WI 60-07
I-joists
TJI® Joists
ASTM E119, CAN/ULC S101
Rating: 1 Hour



1. **TOPPING (Optional):** Lightweight concrete or proprietary topping.
2. **SUB-FLOORING:** Minimum 23/32 in. tongue-and-groove plywood or oriented strand board (OSB) designed and installed per Code requirements and nailed and glued with construction adhesive. **Alternate:** 5/8 in. tongue-and-groove or square-edge plywood or OSB when optional topping is used.
3. **STRUCTURAL MEMBER:** Wood I-Joists
 - A. **CERTIFIED PRODUCT:** Weyerhaeuser NR Company: TJI® Series Joists: TJI 560D.

Minimum depth: 9-1/2 in. Maximum spacing: 24 in. oc.
 - B. Code Compliant Weyerhaeuser Timberstand LSL, Microllam LVL, or Parallam PSL Certified to ASTM D5456:

Minimum thickness: 1.5 in. Minimum depth: 9-1/2 in. Maximum spacing: 24 in. oc.
4. **MINERAL WOOL:** Minimum 1-1/2 in. thick, minimum 2.5 pcf Thermafiber Sound Attenuation Fire Blankets or Fibrex® Sound Attenuation Fire Batts, friction fitted between bottom flanges of joists and supported on furring channels. The bottom surface of the mineral wool flush with the bottom surface of the flanges, all butt joints located over the channels.
5. **STEEL FURRING CHANNELS:** 0.019 in. or thicker galvanized steel resilient channels. Max. spacing 16 in. oc, fastened to each joist with one 1-5/8 in. Type S screws. For attachment of gypsum board end joints, additional channels are placed such that each board end is supported by its own channel. These additional channels extend to the next joist on each side of the board edges.
6. **GYPSUM BOARD:** One layer, 5/8 in. USG/CGC Sheetrock, Fire Code C" or Westroc "Fireboard C." Maximum board width is 48 in. Joints to be taped and filled. Screw heads to be filled.



Applied to resilient channels with long edge perpendicular to channels and located midway between joists. End joints staggered. Gypsum board fastened with 1 in. Type S screws spaced 12 in. oc in

the field and 8 in. oc at ends. Screws located 1-1/2 in. from end joints.

Consult the listing report on the Directory of Building Products (<https://bpdirectory.intertek.com>) for the edition of the standard(s) evaluated.

Compliance of the assembly described in this Design Listing with the referenced standard relies on verification that the assembly constructed in the field is consistent with that described herein. Intertek certified products may be verified by the approved Intertek label; other products must be verified by the Authority Having Jurisdiction as meeting the specifications stated herein.