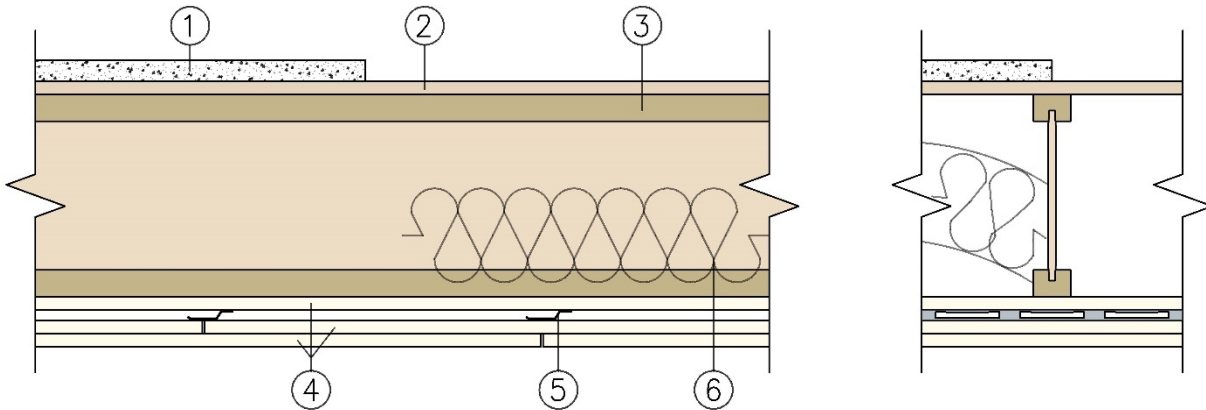


**Weyerhaeuser NR Company**  
**Design No. WNR/WI 120-03**  
**Wood I-Joists**  
**TJI® Joists**  
**ASTM E119, CAN/ULC S101**  
**Rating: 120-minute**



*STC 54 with min. 1-1/2 in. Topping*

**1. TOPPING (Optional):** Lightweight concrete or proprietary topping.

Minimum thickness: 1.5 in. Minimum depth: 9-1/2 in. Maximum spacing: 24 in. oc.

**2. SUB-FLOORING:** Minimum 5/8 in. tongue-and-groove plywood or oriented strand board (OSB) designed and installed per Code requirements. Square-edge panels are permitted when optional topping is used.

**4. GYPSUM:** Three layers of 5/8 in. thick USG/CGC "Sheetrock Fire Code C" or Westroc "Fireboard C" gypsum board. Maximum board width is 48 in. Exposed joints to be taped and filled. Exposed screw heads to be filled.

**3. STRUCTURAL MEMBERS:** Wood I-Joists

A. **CERTIFIED PRODUCT:** Weyerhaeuser NR Company: TJI® Series Joists: TJI 110, TJI 210, TJI 230, TJI 360, TJI 560, TJI 560D.

Minimum depth: 9-1/2 in. Maximum spacing: 24 in. oc.

B. Code Compliant Weyerhaeuser Timberstand LSL, Microllam LVL, or Parallam PSL Certified to ASTM D5456.

The base layer is installed with the long dimensions perpendicular to the joists, end joints centered on the joists. Attached with Type W screws spaced 8 in. oc on intermediate supports and 8 in. oc on end supports. Screws located 1-1/2 in. from side joints and 3/4 in. from end joints. Screws must penetrate minimum 1 in. into wood member.

Face and middle layers are installed perpendicular to the furring channel, with end joints centered on the channel. All middle and face layer joints are to be staggered. Face and middle layers fastened to channels with Type S



screws are spaced 8 in. oc, located 1-1/2 in. from side joints and 3/4 in. from end joints. 1 in. screws required for middle layer. 1-5/8 in. screws required for face layer.

5. **STEEL FURRING CHANNEL:** 0.019 in. or thicker galvanized steel resilient or 0.017 in. or thicker galvanized steel hat channels. Installed 16 in. oc and attached to each joist with minimum 1-7/8 in. type W screws.

6. **INSULATION (Optional):** Fiberglass batt insulation, 3.5 in. thick, supported by stay wires at 12 in. oc installed between the bottom flanges.

*Consult the listing report on the Directory of Building Products (<https://bpdirectory.intertek.com>) for the edition of the standard(s) evaluated.*

*Compliance of the assembly described in this Design Listing with the referenced standard relies on verification that the assembly constructed in the field is consistent with that described herein. Intertek certified products may be verified by the approved Intertek label; other products must be verified by the Authority Having Jurisdiction as meeting the specifications stated herein.*