
General Coatings Manufacturing Corp. and Universal Polymers Corporation

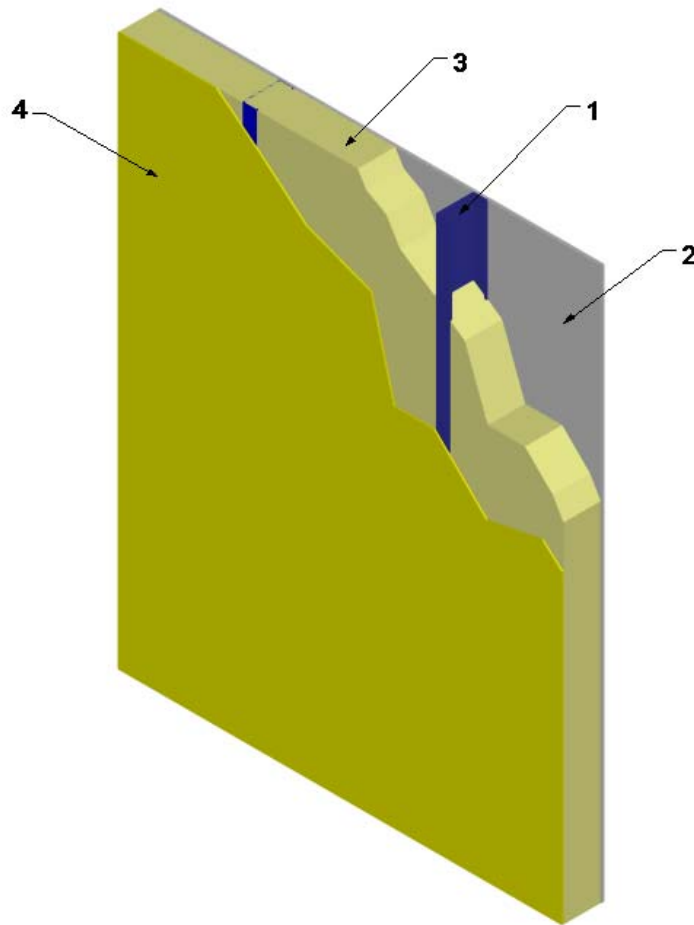
Design No. GCM/FI 30-01

Spray Polyurethane Foam Insulation

Ultra-Thane 050, Ultra-Thane 050 MAX, UPC 500, and UPC 500 MAX

NFPA 285

Rating: Meets Conditions of Acceptance



- 1. WALL FRAMING:** Install minimum 3-5/8 in. deep, maximum 6 in. deep, 20 GA galvanized steel studs spaced max. 24 in. on center (oc). Secure steel studs to minimum 3-5/8 in. 20 GA top and bottom track (not shown) using #8, 7/16 in. long, self-tapping, pan-head framing screws.
- 2. GYPSUM BOARD:** Install 5/8 in. thick Type X gypsum board with long dimension perpendicular to studs (Item 1). Attach to steel studs (Item 1) using #6, Type S, 1-1/4 in. long, self-tapping, bugle-head screws.

Space fasteners 8 in. oc around perimeter and 12 in. oc in the field.

- A. Joint Tape and Compound (Not Shown):** Apply a level 2 finish of vinyl or casein, dry or premixed joint compound applied to the following elements: Apply to face layer of gypsum board (Item 2) in two coats to all exposed fastener heads and gypsum board joints. Embed minimum 2-inch-wide paper, plastic, or fiberglass tape in first layer of compound over joints in gypsum board (Item 2).



Division 07 – Thermal and Moisture Protection

07 21 00 Thermal Insulation

07 21 19 Foamed-In-Place Insulation

3. CAVITY INSULATION: Spray-apply one of the following insulations at its nominal density to completely or partially fill the steel stud (Item 1) cavity, leaving a maximum 2-inch air gap.

A. **CERTIFIED COMPANY:** General Coatings Manufacturing Corp.

CERTIFIED PRODUCT: Spray Polyurethane Foam Insulation

CERTIFIED MODELS: Ultra-Thane 050 (nominal density 0.52 pcf) or Ultra-Thane 050 MAX (nominal density 0.45 pcf)

B. **CERTIFIED COMPANY:** Universal Polymers Corporation

CERTIFIED PRODUCT: Spray Polyurethane Foam Insulation

CERTIFIED MODELS: UPC 500 (nominal density 0.52 pcf) or UPC 500 MAX (nominal density 0.45 pcf)

4. EXTERIOR SHEATHING: Install 5/8 in. thick, Type X exterior gypsum sheathing to the exterior side of studs (Item 1). Install sheathing with long dimension perpendicular to studs. Attach to steel studs using #6, Type S, 1-1/4 in. long, self-tapping, bugle-head screws Space fasteners 8 in. oc around perimeter and 12 in. oc in the field.

5. OPENINGS (Not Shown): Openings must be protected with 20 GA steel framing.

6. FLOORLINE FIRESTOPPING (Not Shown): Install 4 in. thick, 4.0 pcf mineral wool in the stud cavity at the floorlines.

7. EXTERIOR WALL COVERINGS (Not Shown): Details of exterior wall coverings and fenestration details must be provided to the building official along with an engineering analysis demonstrating that the addition of the wall covering and fenestration details will not negatively impact conformance of the assembly with the requirements of IBC Section 2603.5.

Consult the listing report on the Directory of Building Products (<https://bpdirectory.intertek.com>) for the edition of the standard(s) evaluated.