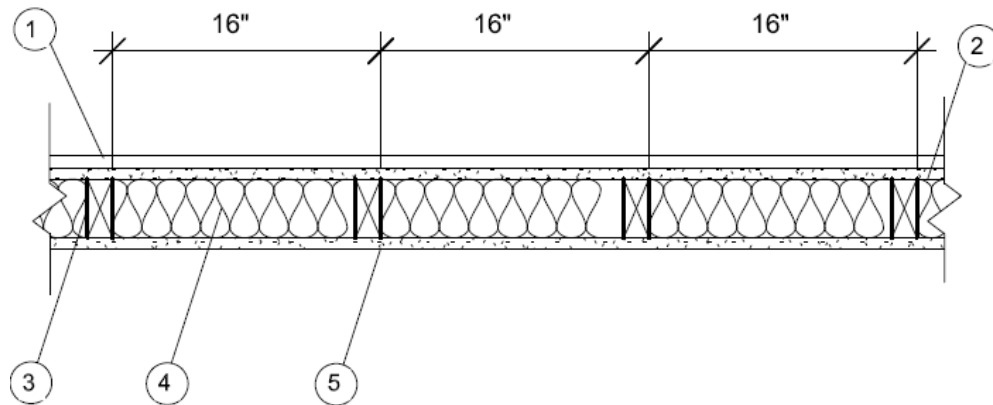


Westlake Royal Building Products
Design No. WRBP/PS 60-01
Vinyl Siding
Royal and Exterior Portfolio Insulated Siding
ASTM E119
Rating: 1 Hour



- 1. INSULATED SIDING:** Westlake Royal Building Products insulated siding products are extruded, rigid polyvinyl chloride (PVC) foam backed siding.

CERTIFIED PRODUCT: Royal and Exterior Portfolio Insulated Siding, 1 Hour, Non-Load Bearing Wall Assembly.

See VSI listing report PCL-0302 for certified products.

- 2. EXTERIOR SHEATHING:** Min. 5/8 in. glass mat exterior gypsum sheathing, Type X meeting ASTM C1177, vertical, attached with #8 x 2 in. long Type W bugle-head fasteners, spaced at 8 in. oc.

- 3. WOOD STUDS:** Min. 2x4 wood framing, a max. of 16 in. oc.

- 4. INSULATION:** R-13 kraft-faced batt insulation (ASTM C665 Type II) in stud cavities.

- 5. INTERIOR SHEATHING:** 5/8-inch Type X gypsum board meeting ASTM C1396, vertical or horizontal, attached with 2 in., Type W drywall screws, spaced at 8 in. on center (oc).

- 6. JOINTS AND FASTENER HEADS:** All interior and exterior gypsum board joints must be taped and treated with joint compound in accordance with ASTM C840. Fastener heads must be treated with joint compound in accordance with ASTM C840.

Consult the listing report on the Directory of Building Products (<https://bpdirectory.intertek.com>) for the edition of the standard(s) evaluated.

Compliance of the assembly described in this Design Listing with the referenced standard relies on verification that the assembly constructed in the field is consistent with that described herein. Intertek certified products may be verified by the approved Intertek label; other products must be verified by the Authority Having Jurisdiction as meeting the specifications stated herein.