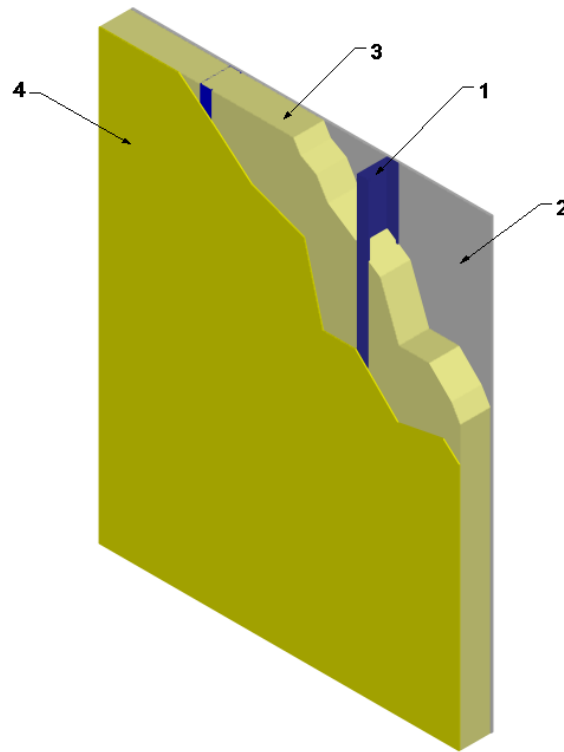

Gaco, a division of Holcim Solutions and Products US, LLC
Design No. GWL/FI 30-03
Non-Load Bearing Wall System
GacoOneFill FR6500R
NFPA 285
Rating: Meets Conditions of Acceptance



- 1. WALL FRAMING:** Install 3-5/8 in. deep, 20 GA galvanized steel studs spaced max. 24 in. on center (oc). Secure steel studs to 3-5/8 in. 20 GA top and bottom track (not shown) using #8, 1/2 in. long, self-tapping, pan-head framing screws.

OPTIONAL – Install nominal 2 x 4 fire-retardant treated wood studs, complying with the definition and requirements prescribed in the International Building Code. Studs shall be spaced max. 16 in. oc.

- 2. GYPSUM BOARD:** Install 5/8 in. thick Type X gypsum board, installed with long dimension

perpendicular to studs (Item 1). Attach to steel studs (Item 1) using #6, Type S, 1-1/4 in. long, self-tapping, bugle-head screws. Attach to wood studs (Item 1) using #6, 1-5/8 in. long, coarse thread, bugle-head screws, or use #13, 1-5/8 in. drywall nails.

Fasteners for fire-retardant treated wood studs shall be of hot-dipped zinc-coated galvanized steel, stainless steel, silicon bronze, or copper.

Space fasteners 8 in. oc around perimeter and 12 in. oc in the field.



Division 07 – Thermal and Moisture Protection
07 21 00 Thermal Insulation
07 21 19 Foamed-In-Place Insulation

3. INSULATION:

CERTIFIED PRODUCT: GacoOneFill FR6500R
Spray Polyurethane Foam Insulation

Spray-apply a nominal 3-5/8 in. thick layer of GacoOneFill FR6500R at a nominal density of 0.55 pcf, to completely fill the steel stud (Item 1) cavity.

- 4. EXTERIOR SHEATHING:** Install 5/8 in. thick, GP DensGlass® Gold Exterior Sheathing to the exterior side of studs (Item 1). Install sheathing with long dimension perpendicular to steel studs using #6, Type S, 1-1/4 in. long self-tapping, bugle-head screws.

Attach to wood studs (Item 1) using #6, 1-5/8 in. long, coarse thread, bugle-head screws, or use #13, 1-5/8 in. drywall nails.

Fasteners for fire-retardant treated wood studs shall be of hot-dipped zinc-coated galvanized steel, stainless steel, silicon bronze, or copper.

Space fasteners 8 in. oc around perimeter and 12 in. oc in the field.

- 5. OPENINGS:** (Not Shown) Openings must be protected with 20 GA steel framing.
- 6. FLOORLINE FIRESTOPPING:** (Not Shown) Install 4.0 in. thick, 4.0 pcf mineral wool in the stud cavity at the floor lines.

Consult the listing report on the Directory of Building Products (<https://bpdirectory.intertek.com>) for the edition of the standard(s) evaluated.

Compliance of the assembly described in this Design Listing with the referenced standard relies on verification that the assembly constructed in the field is consistent with that described herein. Intertek certified products may be verified by the approved Intertek label; other products must be verified by the Authority Having Jurisdiction as meeting the specifications stated herein.