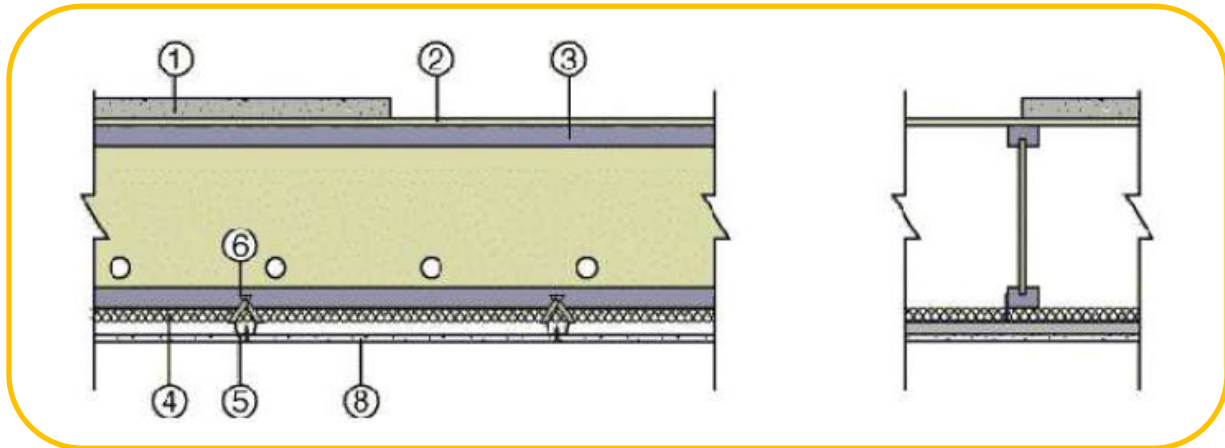


**Pacific Woodtech Corporation**  
**Design No. PWT/WIJ 60-07**  
**Wood I-Joists**  
**PWT I-Joists**  
**ASTM E119, CAN/ULC S101**  
**Rating: 60 minutes**



1. **TOPPING (Optional):** Lightweight concrete or proprietary topping.
2. **SUB-FLOORING:** 23/32 in. tongue and groove plywood or OSB, installed with nails and construction adhesive onto joist and also into grooved edge of panels. End joints staggered 24 in.
3. **WOOD I-JOIST:**

**CERTIFIED PRODUCT:** Pacific Woodtech Corporation, PWT I-Joist

PWT I-Joists having a min. flange dimension of 1-1/2 in. wide by 1-1/2 in. thick and having a min depth of 9-1/2 in., min. 3/8 in. web, installed at 24 in. on center (oc) max.

4. **INSULATION :** Mineral wool nominal 9 pcf Roxul RHT or US Gypsum Thermafibre batts, 1 in. thick. Installed with width of batt equal to oc spacing of joists. Batts inserted between

furring channels and bottom flanges of joists with long dimension perpendicular to furring channels and the butted ends centered over furring channels.

5. **STEEL FURRING CHANNELS:** Formed of min. 26 GA galvanized steel channels installed perpendicular to joists. Additional furring channels spaced 1-1/2 in. in from the edge and on each side of gypsum board end joints and extending 24 in. either side past end joint. Channels secured to joists with support clips at each joist location. At channel splices, adjacent pieces overlapped 6 in. and tied with double strand No. 18 SWG galvanized steel wire at each end of overlaps
6. **SUPPORT CLIPS:** One Simpson Co. Type SCS support clip to be used to support furring channels at each joist intersection. Support clips nailed to one side of joist bottom flange with 1-1/2 in. long, 0.125 in. diameter nail.



- 7. TEE SECTION (Not shown):** Commercially available corner bracing or wind bracing, 20 GA galvanized steel, installed perpendicular to channels at wallboard edge joints. Tee section measures 1-7/8 in. wide overall, with short leg 7/16 in. long overall. Adjacent wallboard edges fastened to tee section with 1 in. Type S screws, 8 in. oc.
- 8. GYPSUM BOARD:** 5/8 in. Type C gypsum wallboard installed perpendicular to channels. End and edge joints backed by sheet metal tee sections with end joints staggered.

*Consult the listing report on the Directory of Building Products (<https://bpdirectory.intertek.com>) for the edition of the standard(s) evaluated.*

*Compliance of the assembly described in this Design Listing with the referenced standard relies on verification that the assembly constructed in the field is consistent with that described herein. Intertek certified products may be verified by the approved Intertek label; other products must be verified by the Authority Having Jurisdiction as meeting the specifications stated herein.*