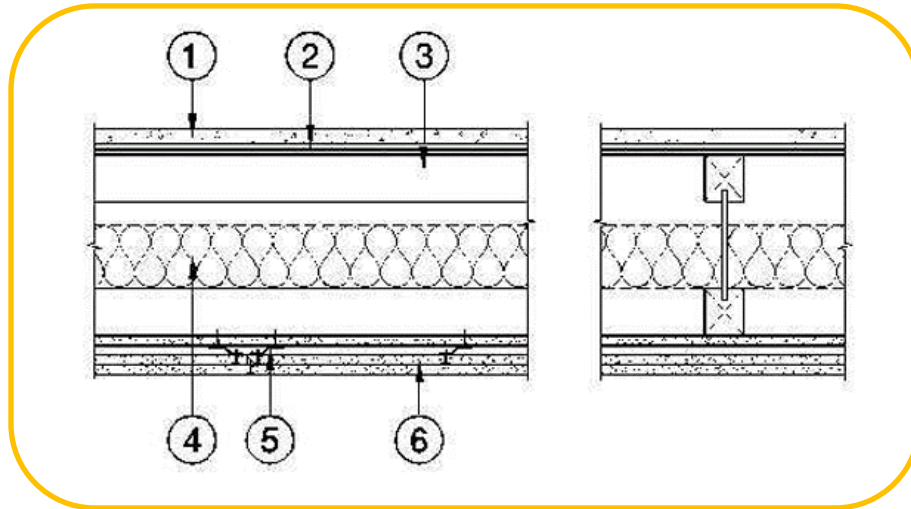


**Pacific Woodtech Corporation**  
**Design No. PWT/WIJ 120-02**  
**Wood I-Joists**  
**PWT I-Joists**  
**ASTM E119, CAN/ULC S101**  
**Rating: 2 - hours**



1. **TOPPING (OPTIONAL):** Lightweight concrete or proprietary topping.  
  
above joist flanges and supported by stay wires 12 in. apart.
2. **SUB-FLOORING:** Minimum 5/8 in. tongue and groove plywood or oriented strand board (OSB). Sub-flooring installed perpendicular to joists, with end joints staggered, fastened in accordance with Code requirements.
3. **WOOD I-JOIST:**  
**CERTIFIED PRODUCT:** Pacific Woodtech Corporation, PWT I-Joist  
  
PWT I-Joists having a min. flange dimension of 1-1/2 in. wide by 1-1/2 in. thick and having a min. depth of 9-1/2 in., min. 3/8 in. web, installed at 24 in. on center (oc) max.
4. **INSULATION (Optional):** Min 3-1/2 in. thickness fiberglass batt insulation located
5. **STEEL CHANNELS:** Nominal 1/2 in. offset min. 25-gauge galvanized steel channels, hat shaped, installed over base layer of gypsum, perpendicular to joists and spaced 16 in. oc max.
6. **GYPSUM BOARD:** Three layers of 5/8 in. Type C wallboard. Base layer installed perpendicular to joists, with end joints centered on joists and fastened directly to joists with 1-5/8 in. Type S screws spaced 12 in. oc. End joints staggered. Middle and face layers to be applied perpendicular to channels with end and edge joints located over channels and end and edge joints staggered between layers. Middle layer fastened to channels with 1 in. Type S screws, 12 in. oc, face layer to be fastened with 1-5/8 in. long Type S screws located 8 in. oc.



*Consult the listing report on the Directory of Building Products (<https://bpdirectory.intertek.com>) for the edition of the standard(s) evaluated.*

*Compliance of the assembly described in this Design Listing with the referenced standard relies on verification that the assembly constructed in the field is consistent with that described herein. Intertek certified products may be verified by the approved Intertek label; other products must be verified by the Authority Having Jurisdiction as meeting the specifications stated herein.*