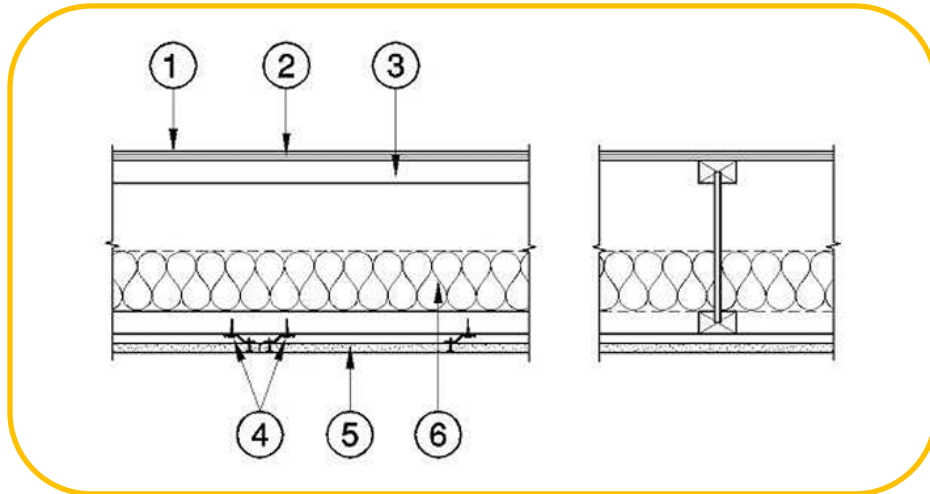


Pacific Woodtech Corporation
Design No. PWT/WIJ 45-02
Wood I-Joists
PWT I-Joists
ASTM E119, CAN/ULC S101
Rating: 45 minutes



STC Rating Without Topping: 50
STC Rating With Topping: 57
IIC Rating Without Topping or Floor Covering: 45

1. TOPPING (Optional, Not Shown): Lightweight concrete or proprietary topping.

2. SUB-FLOORING: Min. 3/4 in. tongue and groove plywood or OSB, installed perpendicular to joists, with end joints staggered and fastened in accordance with Code requirements. Min. 19/32 in. tongue and groove plywood or OSB, when joist spacing is 16 in. or 19.2 in. on center (oc) max.

3. WOOD I-JOIST

CERTIFIED PRODUCT: Pacific Woodtech Corporation, PWT I-Joists

PWT I-Joists having a min depth of 9-1/2 in. and flange dimension of 1-3/4 in. wide by 1-1/2 in. thick, min. 3/8 in. web, installed at 24 in. oc max.

4. RESILIENT CHANNELS: Nominal 1/2 in. offset, min. 25-gauge galvanized steel channels installed perpendicular to joists and spaced 16 in. oc max. Additional channels required at gypsum board end joists such that each board end rests on its own channel. These additional channels shall extend to the next joist on each side of the board edges. Channels fastened with 1-1/2 in. Type S screws at each joist intersection.

5. GYPSUM BOARD: One layer of 5/8 in. Type X wallboard installed perpendicular to channels with end joints staggered 48 in. Boards to be fastened to channels with min. 1 in. screws located 8 in. oc in the field areas of boards, and 6 in. oc along board edges. Screws shall be min.



1-1/2 in. from board edges and 3/4 in. from board ends. Wallboard shall be taped and filled. Screw heads shall be filled with gypsum joint compound.

6. INSULATION (Optional): 3-1/2 in. thickness, friction fit between flanges.

Consult the listing report on the Directory of Building Products (<https://bpdirectory.intertek.com>) for the edition of the standard(s) evaluated.

Compliance of the assembly described in this Design Listing with the referenced standard relies on verification that the assembly constructed in the field is consistent with that described herein. Intertek certified products may be verified by the approved Intertek label; other products must be verified by the Authority Having Jurisdiction as meeting the specifications stated herein.