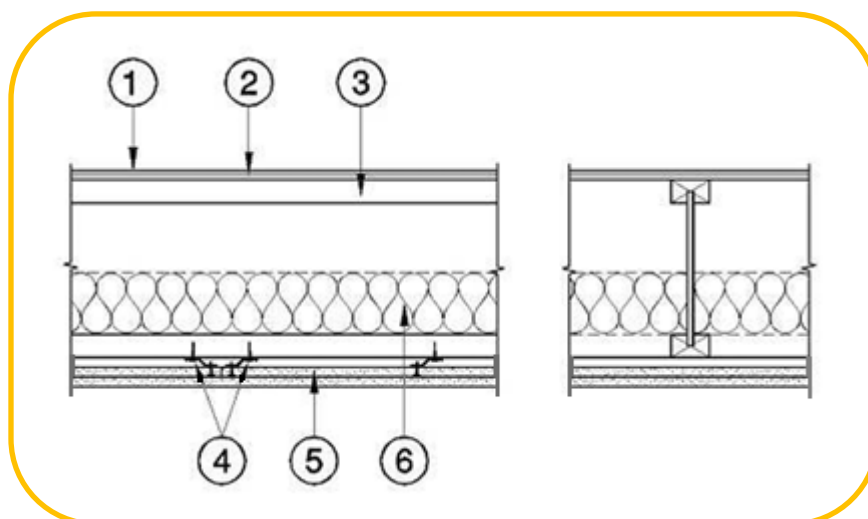


**Pacific Woodtech Corporation**  
**Design No. PWT/WIJ 60-06**  
**Wood I-Joists**  
**PWT I-Joists**  
**ASTM E119, CAN/ULC S101**  
**Rating: 60 minutes**



STC Rating Without Topping: 50  
IIC Without Topping or Floor Covering: 45

1. **TOPPING (OPTIONAL):** Lightweight concrete or proprietary topping.
2. **SUB-FLOORING:** Min. 5/8 in. tongue and groove plywood or oriented strand board (OSB), installed perpendicular to joists, with end joints staggered, fastened in accordance with Code requirements.
3. **WOOD I-JOIST:**  
  
**CERTIFIED PRODUCT:** Pacific Woodtech Corporation, PWT I-Joist  
  
PWT I-Joists having a min. flange dimension of 1-1/2 in. wide by 1-1/2 in. thick, and having a min. depth of 9-1/2 in., min. 3/8 in. web, installed at 24 in. on center (oc) max.
4. **RESILIENT CHANNELS (Optional):** Nominal 1/2 in. offset, min. 25-gauge galvanized steel channels installed perpendicular to joists and spaced 24 in. oc max.
5. **GYPSUM BOARD:** Two layers of 1/2 in. Type X wallboard installed perpendicular joists or furring channels. Base layer gypsum wallboard installed with end joints located on joists or channels and end joints staggered min. 16 in. Base layer fastened to joists or channels with 1-5/8 in. screws, located 12 in. oc. Face layer end and edge joints to be staggered from those of base layer. Face layer end joints to be located on joists or channels, and fastened with 2-1/4 in. Type W screws located 12 in. oc. Additionally, fasten face layer to base layer



with 1-1/2 in. Type G screws 8 in. oc, placed 6 in. from face layer end joints. Face layer board joints to be taped and filled, and screw heads to be filled with joint compound.

- 6. INSULATION (Optional):** Min. 3-1/2 in. thickness fiberglass batt insulation, located above joist flanges and support by stay wires 12 in. apart.

*Consult the listing report on the Directory of Building Products (<https://bpdirectory.intertek.com>) for the edition of the standard(s) evaluated.*

*Compliance of the assembly described in this Design Listing with the referenced standard relies on verification that the assembly constructed in the field is consistent with that described herein. Intertek certified products may be verified by the approved Intertek label; other products must be verified by the Authority Having Jurisdiction as meeting the specifications stated herein.*