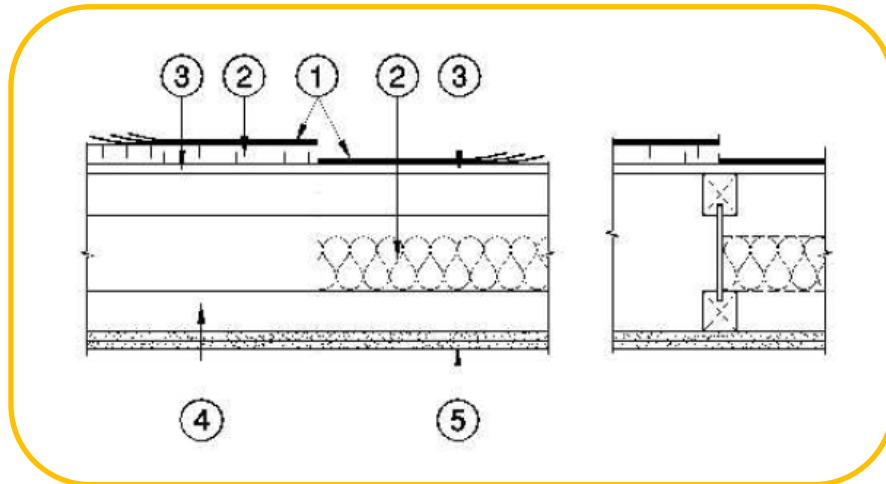


**Pacific Woodtech Corporation**  
**Design No. PWT/WIJ 60-09**  
**Wood I-Joists**  
**PWT I-Joists**  
**ASTM E119, CAN/ULC S101**  
**Roof/Ceiling Assembly**  
**Rating: 60 minutes**



**OPTION 1**

1. **ROOF COVERING:** Any Class "C" rated roof covering system listed for use in similar assemblies.
2. **ROOF INSULATION:** Sheathing material and adhesive products listed for use in similar 60-minute rated assemblies.
3. **SHEATHING:** Min. 5/8 in. tongue and groove plywood or OSB, installed perpendicular to joists with end joints staggered, and fastened in accordance with Code requirements.
2. **INSULATION (Optional):** Max. 8 in. thickness fiberglass batt insulation located above joist flanges.
3. **SHEATHING:** Min. 5/8 in. tongue and groove plywood or OSB, installed perpendicular to joists with end joints staggered, and fastened in accordance with Code requirements.
4. **WOOD I-JOIST:**

**CERTIFIED PRODUCT:** Pacific Woodtech Corporation, PWT I-Joist

**OPTION 2**

1. **ROOF COVERING:** Any Class "C" rated roof covering system listed for use in similar assemblies.

PWT I-Joists having a min. flange dimension of 1-1/2 in. wide by 1-1/2 in. thick and having a min. depth of 11-1/4 in., min. 3/8 in. web, installed at 24 in. on center (oc) max.



- 5. GYPSUM BOARD:** Two layers of 1/2 in. Type X wallboard installed perpendicular to joists. Base layer gypsum wallboard installed with end joints located on joists and staggered min. 16 in. Base layer fastened to joists or channels with 1-5/8 in. screws, located 12 in. oc. Face layer end and edge joints to be staggered from those of base layer. Face layer end joints to be

located on joists or channels, and fastened with 2-1/4 in. Type S screws located 12 in. oc. Face layer board joints to be taped and filled, and screw heads to be filled with joint compound.

*Consult the listing report on the Directory of Building Products (<https://bpdirectory.intertek.com>) for the edition of the standard(s) evaluated.*

*Compliance of the assembly described in this Design Listing with the referenced standard relies on verification that the assembly constructed in the field is consistent with that described herein. Intertek certified products may be verified by the approved Intertek label; other products must be verified by the Authority Having Jurisdiction as meeting the specifications stated herein.*