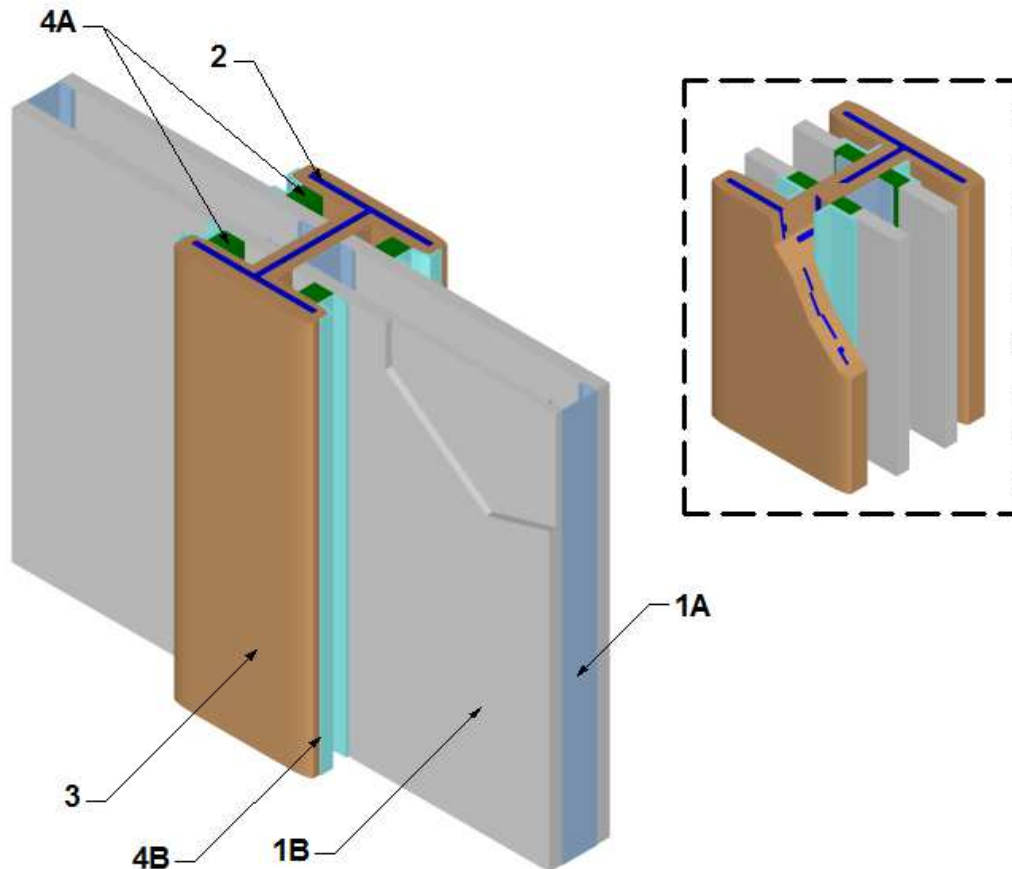

Design Number STI/JF 120-01
Vertical Joint System
Specified Technologies, Inc.
SpecSeal AS Elastomeric Firestop Spray
ASTM E 1966
Rating: 120 Minutes
Cycling: None



1. WALL ASSEMBLY: Construct 2-hour rated wall assembly containing the following elements:

- A. STEEL STUDS: Install minimum 3-5/8 in. deep, 25 GA galvanized steel studs spaced maximum 24 in. on center (oc) and floated between 3-5/8 in. deep 25 GA top and bottom track (not shown).
- B. Gypsum Board: Install two layers of 5/8 in. Type X gypsum board to both sides of wall assembly secured to

the steel studs (Item 1A). Secure base layer to steel studs (Item 1A) using minimum 1 in. long Type S self-drilling screws spaced maximum 16 in. oc around the perimeter and maximum 16 in. oc in the field. Install face layer with joints offset 24 in. from the base layer and secured using minimum 1-5/8 in. long Type S self-drilling screws spaced 16 in. oc around the perimeter and 16 oc in the field staggered 8 in. from the base layer fasteners.

- C. Joint Tape and Compound – (Not Shown) Apply a level 2 finish of vinyl or casein, dry or premixed joint compound as follows. Apply to gypsum board face layer (Item 1B) in two coats to all exposed fastener heads and gypsum board joints. Embed minimum 2 in. wide paper, plastic, or fiberglass tape in first layer of compound over joints in face layer of the gypsum board (Item 1B).
2. COLUMN: Install W 14 x 61 structural steel column in accordance with the applicable building code requirements. Center wall assembly (Item 1) in the web of the column after installation of the fireproof coating (Item 3).
3. FIREPROOF COATING: Apply Isolatek Cafco 300 Fireproofing to the column per the manufacturer's installation instructions to maintain a minimum 2-hour fire resistance rating.
4. FIRE RESISTIVE JOINT SYSTEM:
- Option 1 – Install joints between the face of the gypsum wall assembly and the flanges of the column (Item 2). Maximum joint width 2-1/2 in.

Option 2 – Install joints between edges of gypsum board and web of the column (Item 2). Maximum joint width 1 in.

Install non-loadbearing fire resistive joint system between gypsum wall assembly (Item 1) and column (Item 2) containing the following elements. Maintain maximum joint width of 1-1/2 in.

- A. PACKING MATERIAL: Install nominal 4 pcf density mineral fiber insulation bearing the Intertek Certification Mark compressed minimum 50% in the joint opening.

- B. CERTIFIED COMPANY: Specified Technologies, Inc.

CERTIFIED PRODUCT: Fire Resistant Joint Sealants

MODEL: SpecSeal AS Elastomeric Firestop Spray

FILL, VOID OR CAVITY MATERIAL: Apply minimum 1/8 in. (wet film thickness) thick layer of fill material over fire resistive joint system ensuring minimum 2 in. overlap onto fireproof coating (Item 3) and minimum 1/2 in. onto face of gypsum wall assembly (Item 1).