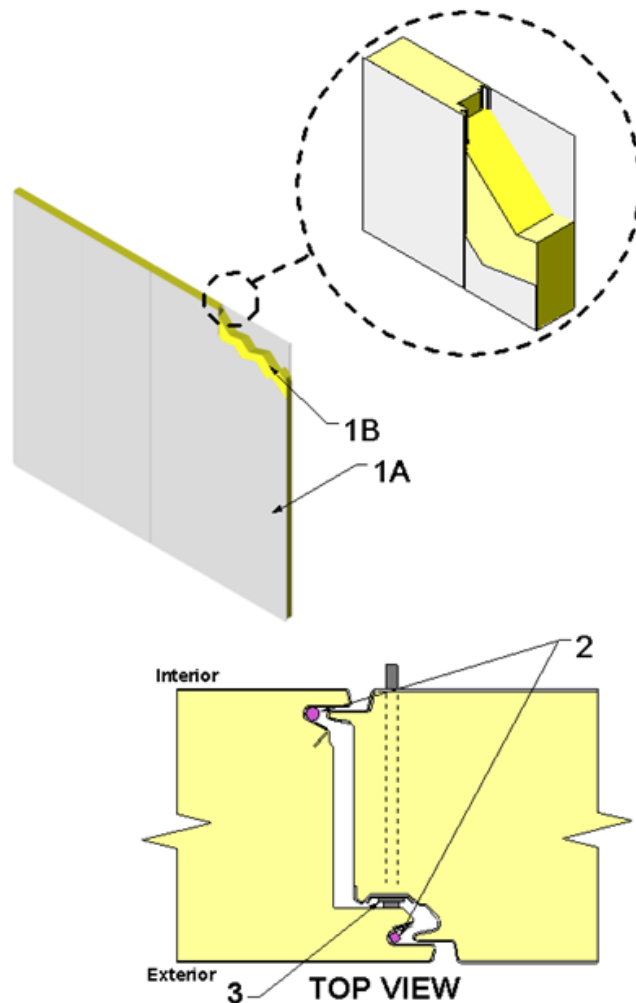

Metl-Span, A Nucor Company
Design No. MSN/IMWP 30-01
Non-Load Bearing Wall System
Metl-Span CF and LS-36 Insulated Panels
NFPA 285
Rating: Meets Conditions of Acceptance



1. **CERTIFIED MANUFACTURER:** Metl-Span, a Nucor Company

CERTIFIED PRODUCT: Wall Panels

CERTIFIED MODEL: (Not Shown) Metl-Span CF Insulated Metal Panels and LS-36 Insulated Metal Panels

INSULATED WALL PANELS: Construct wall of panels measuring nominal 12 to 44-1/2 in. wide. The Metl-Span CF Insulated Metal Panels are min. 2 in. and max. 8 in. thick. The LS-36 panels are min. 1-1/2 in. and max. 6 in. thick. Install panels with the longitudinal (long dimension) edges placed horizontally or vertically. Construct wall panels of the following materials:



- A. **PANEL FACING** – Construct interior and exterior faces of min. 26 GA galvanized or zinc/aluminum alloy coated steel with painted or mill finish, or min. 26 GA stainless steel with mill finish. Panel faces are roll formed with a smooth (no profile) or corrugated profile.
- B. **POLYURETHANE FOAM CORE** – Fill hollow core between panel faces (Item 1A) with nominal 2.17 pcf density polyurethane foam forming the male and female mating edges of the panels.

2. SIDE JOINT SEALANT (Optional):

- A. **CF INSULATED METAL PANEL** – Install a nominal 3/16 in. bead of one component, urethane or butyl sealant, to the female edge of the panel on either the exterior, interior, or both sides prior to joining the insulated wall panels (Item 1A).
- B. **LS-36 INSULATED METAL PANEL** – Install a nominal 3/16 in. bead of one-component, urethane or butyl sealant, to the female edge of the panel on the interior side prior to joining the insulated wall panels (Item 1).

Install butyl tape sealant for the exterior lap joint.

3. FASTENERS: Install fasteners according to panel type.

- A. **CF (CONCEALED-FASTENER) PANELS** – Install two Number 14 or 1/4 in. diameter hex-head screws through 7/8 in. wide x 4 in. long concealed panel clips within the side joints of the insulated wall panel (Item 1). The screws shall be of sufficient length so as to properly engage the wall support member. Install clips at each wall support member.
- B. **LS-36 PANEL (Not Shown)** – Install Number 14 or 1/4 in. diameter x 7/8 in. Lap Tek screws at a min. of 20 in. on center (oc) through the panel overlap at the exterior side joint. Install #14 or 1/4 in. diameter screws through wall panel at 12 in. oc between the major panel ribs to secure the panel to wall support member. The screws shall be of sufficient length so as to properly engage the wall support member. Fasteners shall be used at all wall support members.

Consult the listing report on the Directory of Building Products (<https://bpdirectory.intertek.com>) for the edition of the standard(s) evaluated.

Compliance of the assembly described in this Design Listing with the referenced standard relies on verification that the assembly constructed in the field is consistent with that described herein. Intertek certified products may be verified by the approved Intertek label; other products must be verified by the Authority Having Jurisdiction as meeting the specifications stated herein.