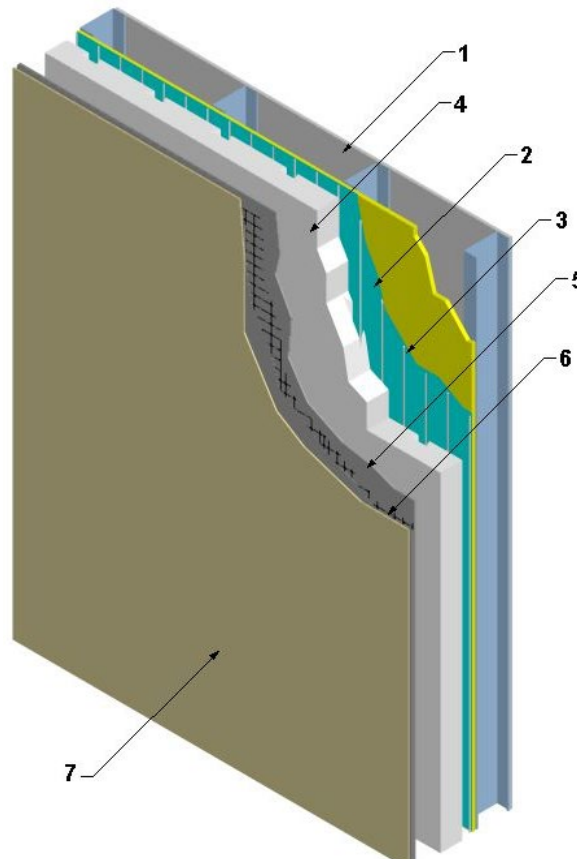


---

**Master Builders Solutions US, LLC**  
**Design No. MBS/WDEIFS 15-01**  
**Exterior Wall System**  
**Senergy Category 2 Exterior Insulation and Finish Systems (EIFS)**  
**CAN/ULC S101, 15 Minutes**  
**Meets the Requirements of Clause 3.2.3.8.(1)(b) of the National Building Code of Canada, 2015**

---



**1. NON-LOADBEARING WALL ASSEMBLY:**

Construct a non-loadbearing wall assembly that shall comply with the local Building Code or other applicable regulatory requirements as established by the local Authority Having Jurisdiction.

**2. WATER-RESISTIVE BARRIER (Optional):** Senergy Senershield-R® is roller- or brush-applied directly to approved wall substrates. All sheathing joints, terminations, and inside and outside corners, must be reinforced with reinforcing fabric. Apply in a continuous layer

on the substrate, and wrap around the framing and around penetrations.

**3. ADHESIVE:** Senerflex Alpha Dry Base® is applied using a 3/8 in. notched trowel with 1/2 in. (13mm) square notches spaced 2 in. (50mm) on center (oc).

**4. INSULATION BOARD:** Install 19mm to 102mm (3/4 in. to 4 in.) thick CAN/ULC S701 Type 1 Expanded Polystyrene (EPS). The nominal density of the EPS is 16 kg/m<sup>3</sup> (1.0 pcf).



Insulation board may be flush-faced or contain drainage cavities in the wall-facing side, 1 in. wide (25mm) × 1/4 in. deep (6mm), spaced 12 in. (300mm) oc.

5. **BASE COAT:** Senerflex Alpha Dry Base® is mixed with approx. 1.5 US gal. (5.6 L) of water per 50 lb. (23 kg) bag over the insulation board. Embed Senergy Flexguard® mesh (see Item 6) in the base coat and apply a second layer of the base coat. Trowel to thoroughly cover the mesh and remove excess. The final base coat average wet thickness measures 0.07 in. (nominal 1.6mm).

6. **MESH:** Senergy Flexguard® 4, Intermediate 6, Intermediate 12, Strong 15, and Hi Impact 20 Reinforcing mesh, edges overlapped 2-1/2 in. (63.5mm), installed vertically, and completely embedded in the Senerflex Alpha Base. The following mesh options may be used:

- Flexguard 4, min. 142 g/m<sup>2</sup>
- Intermediate 6, min. 190 g/m<sup>2</sup>
- Intermediate 12, min. 349 g/m<sup>2</sup>
- Strong 15, min. 508 g/m<sup>2</sup>
- Hi Impact 20, min. 694 g/m<sup>2</sup>  
(100 g/m<sup>2</sup> = 2.95 oz/yd<sup>2</sup>)

7. **FINISH COAT:** Senergy Finish Coat® acrylic finish is applied in accordance with manufacturer's instructions.

Consult the listing report on the Directory of Building Products (<https://bpdirectory.intertek.com>) for the edition of the standard(s) evaluated.