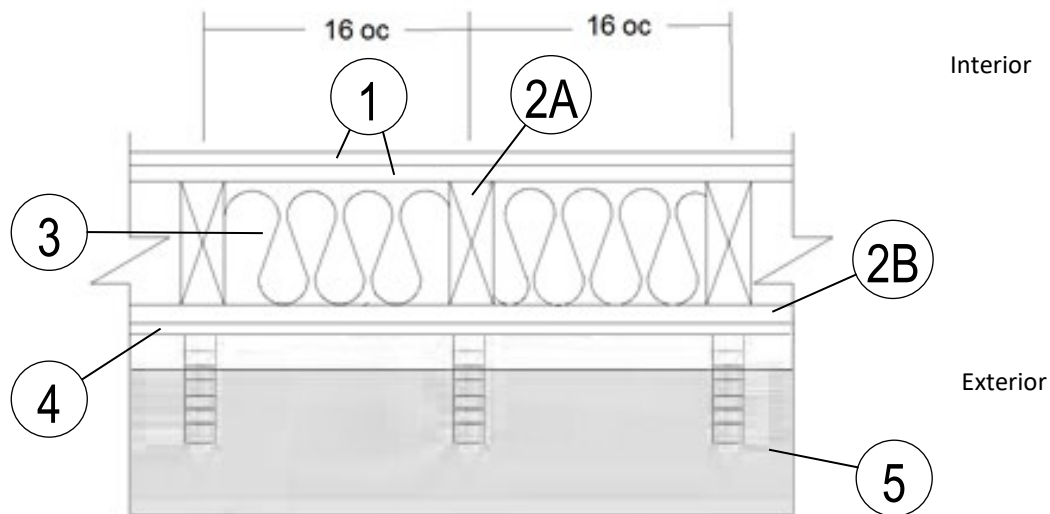


Koppers Performance Chemicals
Design No. KPC/FRWT 120-03
Fire Retardant Wood
FlamePRO™ Lumber and Plywood
ASTM E119, UL 263
Rating: 2 Hour Load Bearing



- 1. GYPSUM BOARD (Interior):** Two layers Type X complying with ASTM C1396 min. 5/8 in. thick, 4 ft. wide applied vertically, fastened to framing. Face layer joints staggered with base layer and covered with paper tape and joint compound.

FASTENERS (Not Shown):

- A. FACE LAYER – Min. #6 × 2 in. long Type S or W screws spaced max. 8 in. on center (oc) and heads covered with joint compound.
- B. BASE LAYER – Min. #6 × 1-5/8 in. long Type S or W screws, spaced max. 6 in. oc.

- 2. CERTIFIED MANUFACTURER:** Koppers Performance Chemicals

CERTIFIED PRODUCT: FlamePRO™

2A. CERTIFIED MODEL: FlamePRO Lumber

FlamePRO Lumber is min. 2×4 in. nominal wood studs spaced 16 in. oc, or 2×6 in. nominal wood studs spaced 24 in. oc, double top plates and

single bottom plate fastened together with 16d common nails (3-1/2 in. × 0.162 in.), 16d box nails (3-1/2 in. × 0.135 in.), or 12d ring nails (3-1/4 in. × 0.135 in.).

2B. CERTIFIED MODEL (Exterior): FlamePRO Plywood

FlamePRO Plywood, min. 15/32 in. thick, applied vertically over the specified framing with min. 2-3/8 in. long, 0.113 in. diameter nails, spaced max. 8 in. oc around the perimeter and max. 12 in. oc in the field. Horizontal joints must be blocked.

- 3. INSULATION:** Fiberglass Class A batt insulation min. 3-1/2 in. thick R-13 friction fit between the studs. If 2×6 in. nominal wood studs are used, fiberglass batt insulation shall be min. 5-1/2 in. thick.

- 4. GYPSUM BOARD (Exterior):** One layer Type X complying with ASTM C1396 min. 5/8 in. thick, 4 ft. wide applied vertically, fastened to framing.



Division 06 – Wood, Plastics, and Composites
06 05 73 Wood Treatment
06 05 73.13 Fire-Retardant Wood Treatment

Face layer joints staggered with base layer and covered with paper tape and joint compound. Fasteners covered with joint compound. Min. #6 x 2 in. long Type 2 or W screws, spaced max 6 in. oc.

2-1/4 in. x 3-3/4 in. clay faced brick with cored holes, fastened using min. 20 GA galvanized wall ties attached to each stud with 8d coated nails, 2-3/8 in. long, 0.113 in. shank, 9/32 in. head, at every 6th course of bricks.

5. **EXTERIOR FACING:** Materials installed in accordance with manufacturer's installation instructions: