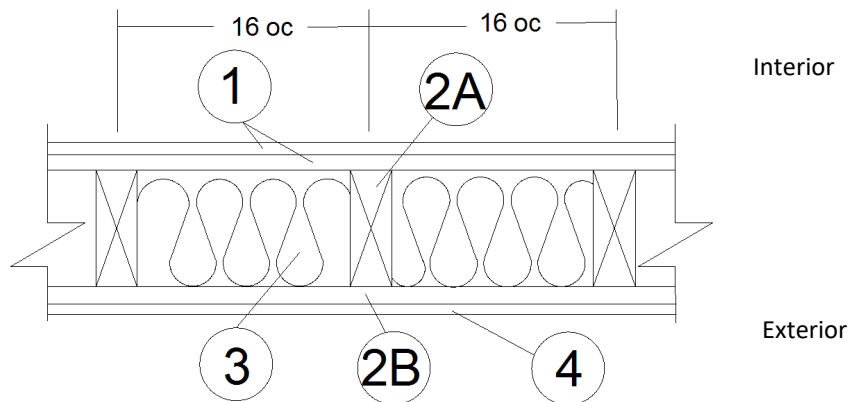


Koppers Performance Chemicals
Design No. KPC/FRWT 120-02
Fire Retardant Wood
FlamePRO™ Lumber and Plywood
ASTM E119, ANSI/UL 263

Rating: 2 Hour Load Bearing from the Interior and 1 Hour Load Bearing from the Exterior
(2015 NDS - F_c 0.96 for FRWT)



1. **GYPSUM BOARD (Interior):** Two layers min. 5/8 in. thick Gypsum Board as listed below (A through G) complying with ASTM C1396, 4 ft. wide applied vertically, fastened to framing. Face layer joints staggered with base layer and covered with paper tape and joint compound.

- A. American Gypsum Firebloc® Type C
- B. CertainTeed Saint-Gobain Type C
- C. Georgia-Pacific Gypsum Fireguard C®
- D. National Gypsum Gold Bond® Fire-Shield C™
- E. Panel Rey® Fire Rey Type C
- F. USG Sheetrock® Firecode® C
- G. USG ULIX Gypsum Board

FASTENERS (Not Shown):

- A. FACE LAYER – Min. #6 × 2 in. long Type S or W screws spaced max. 8 in. on center (oc) and heads covered with joint compound.
- B. BASE LAYER – Min. #6 × 1-5/8 in. long Type S or W screws, spaced max. 6 in. oc.

2. **CERTIFIED MANUFACTURER:** Koppers Performance Chemicals

CERTIFIED PRODUCT: FlamePRO™

2A. CERTIFIED MODEL: FlamePRO Lumber

FlamePRO Lumber is min. 2×4 in. nominal wood studs spaced 16 in. oc, or 2×6 in. nominal wood studs spaced 24 in. oc, double top plates and single bottom plate fastened together with 16d common nails (3-1/2 in. × 0.162 in.), 16d box nails (3-1/2 in. × 0.135 in.), or 12d ring nails (3-1/4 in. × 0.135 in.).

2B. CERTIFIED MODEL (Exterior): FlamePRO Plywood

FlamePRO Plywood, min. 15/32 in. thick, applied vertically over the specified framing with min. 2-3/8 in. long, 0.113 in. diameter nails, spaced max. 8 in. oc around the perimeter and max. 12 in. oc in the field. Horizontal joints must be blocked.

3. **INSULATION:** Fiberglass Class A batt insulation min. 3-1/2 in. thick R-13 friction fit between the studs. If 2×6 in. nominal wood studs are used, fiberglass batt insulation shall be min. 5-1/2 in. thick.



4. EXTERIOR FACINGS: Materials installed in accordance with manufacturer's installation instructions:

- 3/4 in. thick cement plaster (1:4 ratio of cement to sand for scratch coat and 1:5 ratio for brown coat)
- Gypsum Board Type X, complying with ASTM C1396, min. 5/8 in. thick, 4 ft. wide fastened to

the framing. May be installed on either side of (2B). When used fasteners for other facings must be adjusted for the additional thickness.

- Nominal 2.7 in. thick solid brick fastened using min. 22 GA wall ties
- Nominal 2.3 in. thick hollow brick fastened using min. 22 GA wall ties

Consult the listing report on the Directory of Building Products (<https://bpdirectory.intertek.com>) for the edition of the standard(s) evaluated.

Compliance of the assembly described in this Design Listing with the referenced standard relies on verification that the assembly constructed in the field is consistent with that described herein. Intertek certified products may be verified by the approved Intertek label; other products must be verified by the Authority Having Jurisdiction as meeting the specifications stated herein.