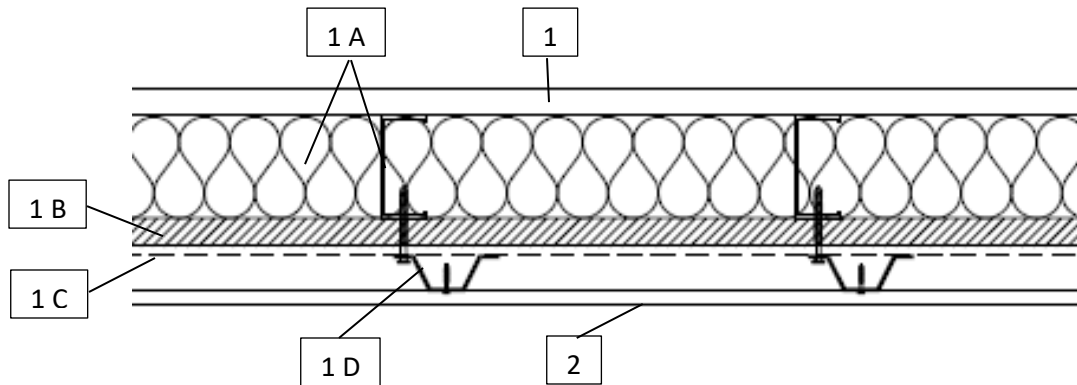


ChamClad
Design No. CWL/SI 25-01
ChamClad PVC Siding
CAN/ULC-S134
Rating: Meets Conditions of Acceptance



1. WALL ASSEMBLY: The wall assembly is to be used in accordance with the requirements of the applicable Building Code or as approved by the Authority Having Jurisdiction. The structural capacity of the framing shall be verified and confirmed by the engineer of record, ensuring that the framing design meets all applicable load-bearing requirements and complies with the relevant structural standards for the specific assembly. The wall assembly shall include the following:

- A. **FRAMING** – Use min. 20 GA steel or wood studs meeting the design requirement, spaced between 406 mm (16 in.) and 610 mm (24 in.) on center (oc), with R-11 batt fiberglass insulation in stud cavities. Wood studs must conform to the Building Code design requirements.
- B. **EXTERIOR SHEATHING** – Install one layer of min. 15.9 mm (5/8 in.) ASTM C1177 gypsum exterior sheathing to framing.
- C. **AIR AND MOISTURE BARRIER** – Install DuPont™ Tyvek® Commercial Wrap®.

- D. **FURRING** – Install 20 GA, min. 38 mm (1-1/2 in.) width and min. 19 mm (3/4 in.) depth, galvanized steel hat channel vertically, spaced between 406 mm (16 in.) and 610 mm (24 in.) oc. Fasten one side of the hat channel through exterior sheathing to framing using 38 mm (1-1/2 in.) self-tapping galvanized or stainless-steel screws, spaced between 406 mm (16 in.) and 610 mm (24 in.).

2. COMPONENT NAME: Siding

CERTIFIED PRODUCT: ChamClad, ChamClad® Siding

Rigid PVC extruded tongue and groove PVC panels with hollow core profile and factory laminated PVC film.

ChamClad® 6 in. Exterior Wall Panel – Nominal dimensions are 150 mm wide x 13 mm or 16 mm thick x 1.65 mm wall thickness.



ChamClad® 12 in. Wall Panel – Nominal dimensions are 300 mm wide x 10 mm or 13 mm thick x 0.94 mm wall thickness.

ChamClad Accessories and Trims including PVC and aluminum starter strips, finishing trim, outside and inside corner trim, H trim, and J trim.

Install siding panels horizontally through nailing slots along the top edge of profiles to furring using 19 mm (3/4 in.) #8 pan-head, self-tapping metal screws.

- 3. VERTICAL JOINTS:** Where vertical joints are present between horizontally installed ChamClad panels, use a PVC ChamClad H trim to cover the joint.

Consult the listing report on the Directory of Building Products (<https://bpdirectory.intertek.com>) for the edition of the standard(s) evaluated.

Compliance of the assembly described in this Design Listing with the referenced standard relies on verification that the assembly constructed in the field is consistent with that described herein. Intertek certified products may be verified by the approved Intertek label; other products must be verified by the Authority Having Jurisdiction as meeting the specifications stated herein.