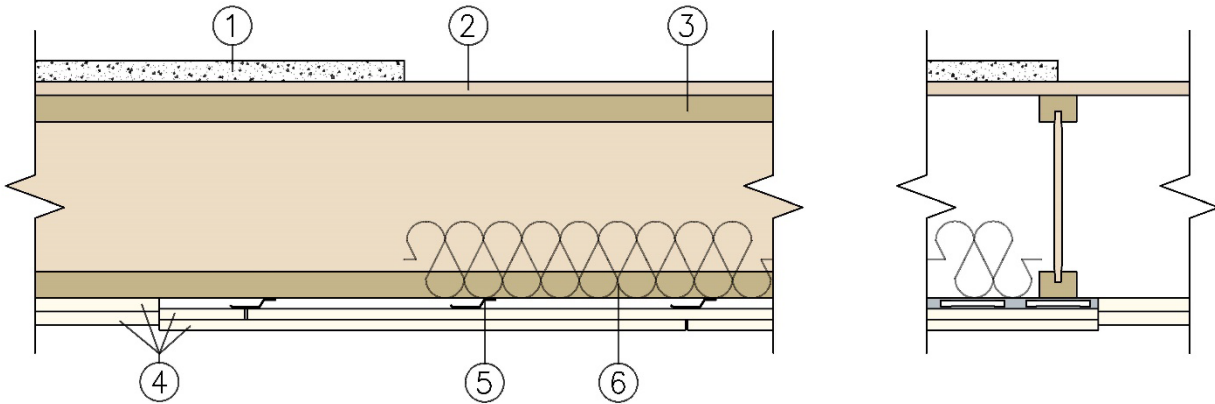


**Weyerhaeuser NR  
WNR/FCA 60-01  
TJI Joists  
STC 50 with Resilient Channels Only  
STC 58 with min 1-1/2 in. Topping & Resilient Channels  
ASTM E119-12a and CAN/ULC S101-07  
ASSEMBLY RATING – 1 Hour, Floor/Ceiling Assembly**



**1. TOPPING (Optional):** Lightweight concrete or proprietary topping.

Min. thickness: 1.5 in., Min. depth: 9-1/2 in.,  
Max spacing: 24 in. oc.

**2. SUB-FLOORING:** Min. 5/8 in. tongue and groove plywood or oriented strand board (OSB) designed and installed per Code requirements. Square edge panels are permitted when optional topping is used.

**4. GYPSUM BOARD:** Two layers of min. 1/2 in. thick Type X or Type C gypsum board. Max. board width is 48 in. Exposed joints to be taped and filled. Exposed screw heads to be filled.

**3. STRUCTURAL MEMBER:** Wood I-Joist

**Application to Joists** (permitted only when 5/8 in. gypsum is used):

A. **CERTIFIED PRODUCT:** Weyerhaeuser NR Company, TJI® Joists Series: TJI 110, TJI 210, TJI 230, TJI 360, TJI 560, TJI 560D:

Min. depth: 9-1/2 in., Max. spacing: 24 in. on center (oc).

Base layer applied to joists with long edge perpendicular to joists and with end joints butted over joists. Adjacent end joints staggered min. 24 in. Base layer attached with Type W screws, spaced 12 in. oc on intermediate supports and 6 in. oc at end supports. Screws must penetrate min. 1 in. into wood member.

B. Code Compliant Weyerhaeuser Timberstand LSL, Microllam LVL, or Parallam PSL Certified to ASTM D5456:

Face layer installed with long edge perpendicular to joists, and edges staggered 24 in. from base layer edges.



End joints located over and attached to joists and staggered min. 24 in. from base layer end joints. Face layer attached with Type W screws, spaced 12 in. oc on intermediate supports and 8 in. oc on end supports. Screws must penetrate min. 1 in. into wood member. Face layer also fastened to base layer with a row of Type G screws, spaced 8 in. oc located 6 in. away from end joints in face layer. Type G screws must penetrate min. of 1 in. beyond surface of base layer.

#### **Application to Channels:**

Base layer applied to furring channels with long edge perpendicular to channels. End joints staggered min. of two channel spacings. Base layer fastened to channels with Type S screws spaced 12 in. oc along channels. 7/8 in. screws required for base layer when using 1/2 in. gypsum board base layer, 1 in. screws required for base layer when using 5/8 in. gypsum board.

Face layer installed with long edges perpendicular to the channels. Long edges staggered 24 in. from base layer edges. End joints staggered a min. of one channel spacing from the

base layer end joints. Face layer attached with Type S screws, spaced 12 in. oc on intermediate supports and 8 in. oc on end supports. 1-3/8 in. screws required for face layer when using 1/2 in. gypsum board. 1-5/8 in. screws required for face layer when using 5/8 in. gypsum board. Face layer also fastened to base layer with a row of Type G screws, spaced 8 in. oc located 6 in. away from end joints in face layer. Type G screws must penetrate min. of 1 in. beyond surface of base layer.

5. **STEEL FURRING CHANNEL:** 0.019 in. or thicker galvanized steel resilient channels, fastened to each joist with one 1-1/4 in. Type W screw, or 0.019 in. or thicker galvanized steel hat channels, fastened to each joist with two 1-1/4 in. Type W screws. Max. spacing 24 in. oc. Channels may be omitted when 5/8 in. thick Type X gypsum board is used.
6. **INSULATION (Optional):** Max. 3-1/2 in. thick fiberglass batt insulation friction fit between flanges or the webs of the joists.

*Consult the listing report on the Directory of Building Products (<https://bpdirectory.intertek.com>) for the edition of the standard(s) evaluated.*

*Compliance of the assembly described in this Design Listing with the referenced standard relies on verification that the assembly constructed in the field is consistent with that described herein. Intertek certified products may be verified by the approved Intertek label; other products must be verified by the Authority Having Jurisdiction as meeting the specifications stated herein.*