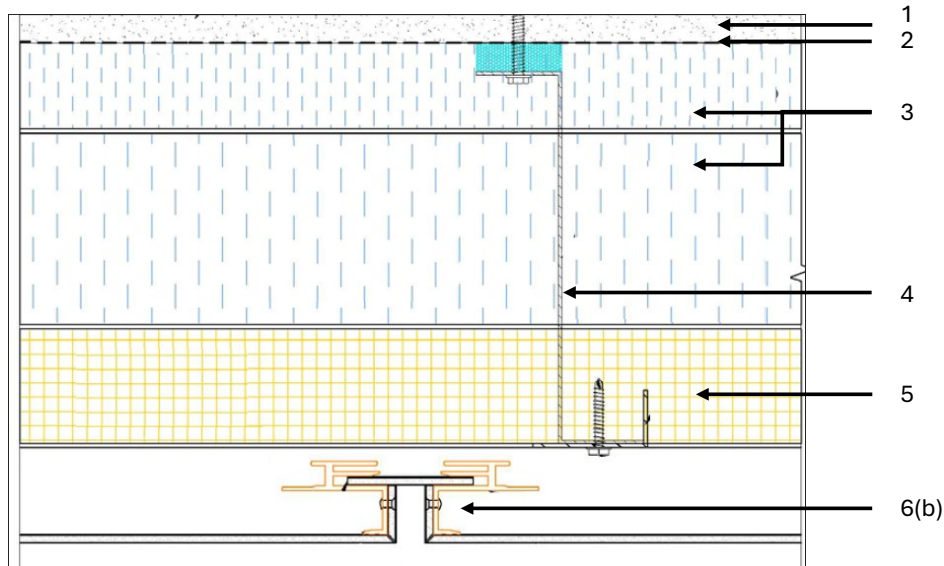
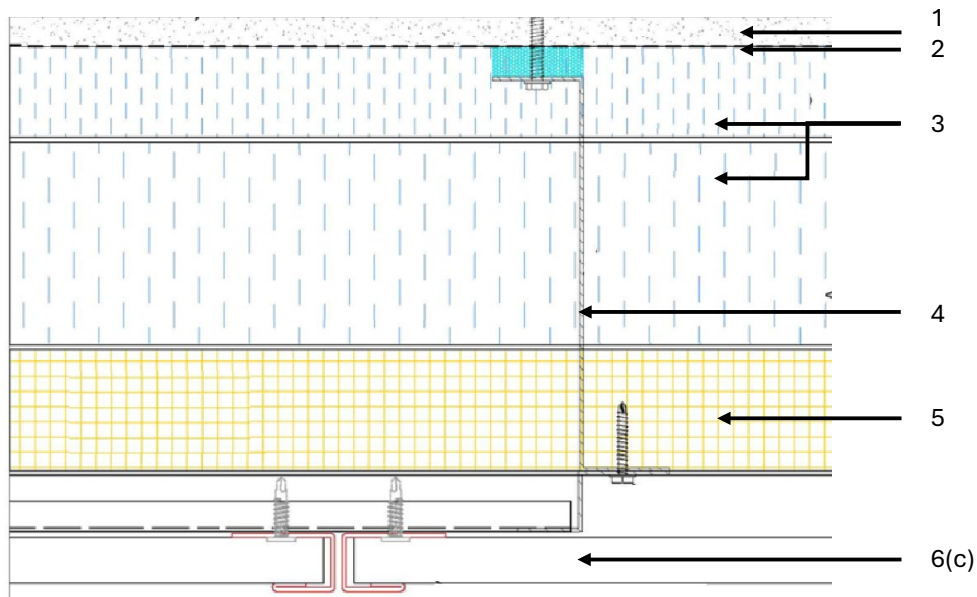


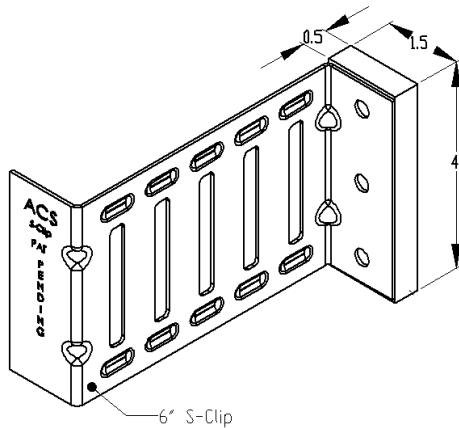
**Soprema Inc.**  
**Design No. SI/WDEIFS 25-01**  
**Exterior Wall System**  
**SOPRA-ISO V ALU and SOPRA-ISO V PLUS**  
**CAN/ULC S134**  
**Rating: Meets Condition of Acceptance**



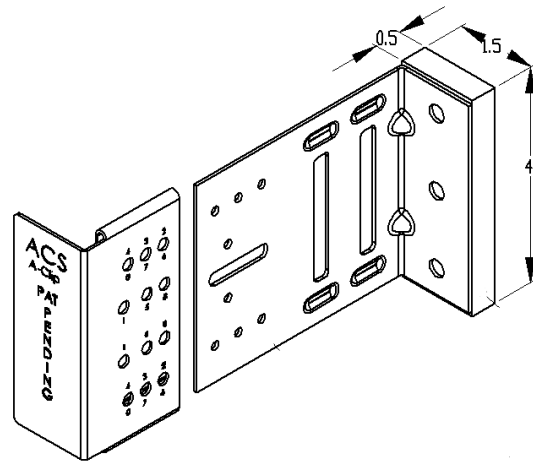
**ASSEMBLY DRAWINGS – ACS COMPOSITE SYSTEMS, ACP SYSTEM-1 WITH 4MM STACBOND A2 CORE ACM**



**ASSEMBLY DRAWINGS – LENMAK SHADOWCLAD**



**SOLID ACS S-CLIPS**



**ADJUSTABLE ACS A-CLIPS**

- 1. SUPPORTING WALL CONSTRUCTION:** The supporting wall must be constructed per the applicable Building Code requirements for non-combustible construction.
- 2. WEATHER BARRIER:** Apply any one of the following weather barrier systems:
  - A. Apply a layer of SOPRASEAL® STICK Primer using a hand roller to the surface of the wall, followed by a layer of SOPRASEAL® STICK 1100T or SOPRASEAL® STICK 130; or
  - B. Apply a layer of SOPRASEAL STICK VP, or SOPRASEAL AVB AT, or SOPRASEAL 60 FF, or SOPRASEAL 180 HD to the surface of the wall; or
  - C. Apply using a hand roller or spray apply a layer of SOPRASEAL LM 200 S or SOPRASEAL LM 204 VP to the surface of the wall; or
  - D. Install a layer of min. 1/2 in. SOPRASEAL® XPRESS G to the surface of the wall.

Installation of the above components is per the manufacturer's standard installation instructions.

### 3. INSULATION BOARDS:

**CERTIFIED PRODUCT:** Soprema Inc., SOPRA ISO V ALU and SOPRA ISO V PLUS Laminated Closed-Cell Polyisocyanurate Foam Insulation Boards.

Install max. 4 in. thick insulation boards horizontally by friction fitting up to two layers, totaling max. 8 in. thick of either SOPRA ISO V ALU or SOPRA ISO V PLUS within the ACS Clips. Slots are cut out of the boards to accommodate the ACS Clips.

- 4. WALL CLIPS:** Install ACS Composite Systems Thermal Clips (solid ACS S-Clips or adjustable ACS A-Clips) to the weather barrier and the supporting wall. Clips are fastened to the wall using a min. of two 1/4 in. x 2-1/2 in. stainless steel concrete fasteners per clip. Clips are spaced max. 48 in. vertically and max. 24 in. horizontally.
- 5. INSULATION:** Install min. 2 in., 4.3 pcf rigid mineral wool insulation boards horizontally by friction fitting between the ACS Clips. Slots are cut out of the insulation board to accommodate the ACS Clips.



- 6. EXTERIOR CLADDING (Optional):** Install one of the following exterior cladding options:
- A. Code compliant non-combustible cladding per manufacturer's standard installation instructions.
  - B. ACS Composite Systems, ACP System-1 with 4mm Stacbond A2 Core ACM. Install min. 16 GA 1/2 in. x 2 in. vertical steel angles, fastened to the ACS clips using 3/4 in. long #12-14 stainless steel SKT 1000 coated fasteners.
  - C. 24 GA Lenmak ShadowClad panels installed using 18 GA, 1-1/2 in. x 1 in. x 1-1/2 in. Z-bar, which is fastened to the ACS clips using 3/4 in. long #12-14 stainless steel SKT 1000 coated fasteners.
- 7. WINDOW FLASHING (Not Shown):** Line the window jambs, sill, and header with 24 GA, max. 8-3/4 in. wide steel flashing (depending on the thickness of the assembly). Install mineral wool along the window perimeter - 4 in. thick at the header and 2 in. thick at the jambs and sill - and cap it with 18 GA steel flashing.

*Consult the listing report on the Directory of Building Products (<https://bpdirectory.intertek.com>) for the edition of the standard(s) evaluated.*

*Compliance of the assembly described in this Design Listing with the referenced standard relies on verification that the assembly constructed in the field is consistent with that described herein. Intertek certified products may be verified by the approved Intertek label; other products must be verified by the Authority Having Jurisdiction as meeting the specifications stated herein.*