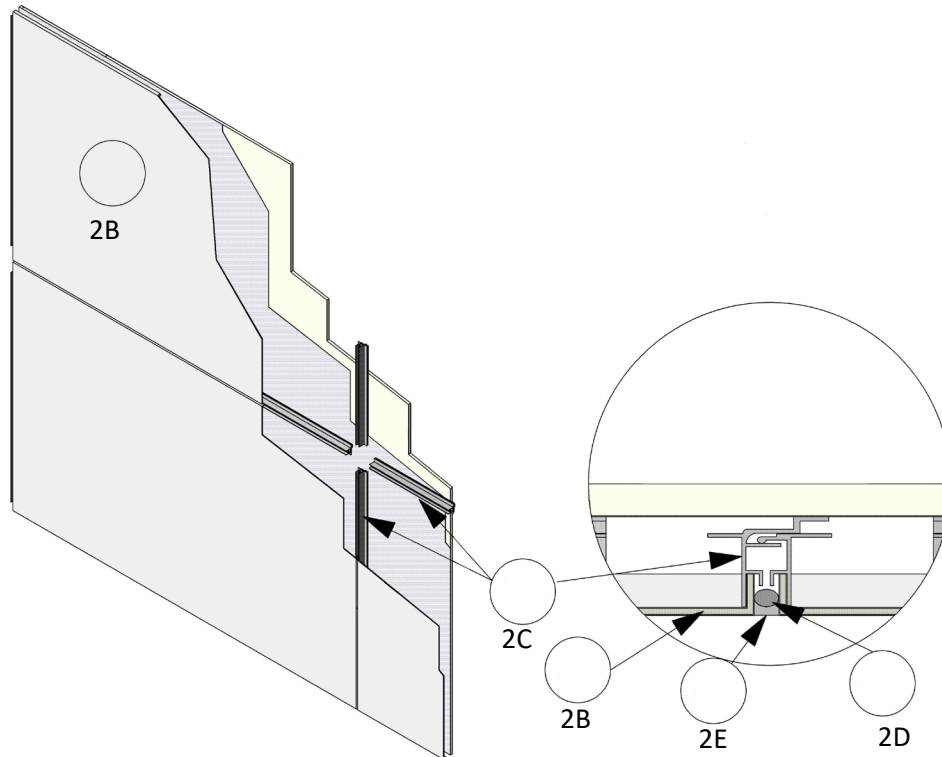


**Alfred, LLC**  
**Design No. UCL/MCMWP 25-01**  
**Exterior Wall Systems**  
**ALFRED**  
**CAN/ULC S134**  
**Rating: Meets Conditions of Acceptance**



**1. NON-COMBUSTIBLE WALL ASSEMBLY** (Not Shown): ALFRED Aluminum Composite (ACM) Panels (Item 2) are to be installed on non-combustible, non-loadbearing wall assemblies as established by the applicable Code and criteria.

**2. CERTIFIED MANUFACTURER:** Alfred, LLC

**CERTIFIED PRODUCT:** Aluminum Composite Panels

**CERTIFIED MODEL:** ALFRED 4 mm Panel

**EXTERIOR VENEER:** Install aluminum composite panels using the following elements:

- A. **ALUMINUM ANGLES** (Not Shown) – Where applicable (such as opening for windows and wall perimeters) install "L" shaped aluminum angle secured into the supporting construction of Item 1 using approved fasteners and methods.
- B. **ALUMINUM COMPOSITE PANELS** – Secure aluminum composite panels to aluminum extrusions (Item 5C) with #12 × 3/4 in. long self-drilling hex-head steel screws min. 24 in. on center (oc). Where applicable secure aluminum composite panel to aluminum angles (Item 2A).



- C. ALUMINUM EXTRUSIONS – Install aluminum extrusion to aluminum composite panels (Item 2B) prior to installation onto wall. Secure aluminum extrusion into the supporting construction of Item 1 using approved fasteners and methods.
- D. BACKER ROD – Install nominal 7/8 in. diameter foam backer rod compressed into joints between the aluminum composite panels (Item 2B). Install backer rod imbedded into the joint so that a min. 1/4 in. space is remaining between the backer rod and the exterior face of the aluminum composite panels (Item 2B).
- E. SEALANT – Install a min. 1/4 in. thick bead of Dow Corning® 795 Silicone Building Sealant into joints between aluminum composite panels (Item 2B) over the backer rod. Sealant installed to be flush with the exterior surface of the aluminum composite panels.

*Consult the listing report on the Directory of Building Products (<https://bpdirectory.intertek.com>) for the edition of the standard(s) evaluated.*

*Compliance of the assembly described in this Design Listing with the referenced standard relies on verification that the assembly constructed in the field is consistent with that described herein. Intertek certified products may be verified by the approved Intertek label; other products must be verified by the Authority Having Jurisdiction as meeting the specifications stated herein.*