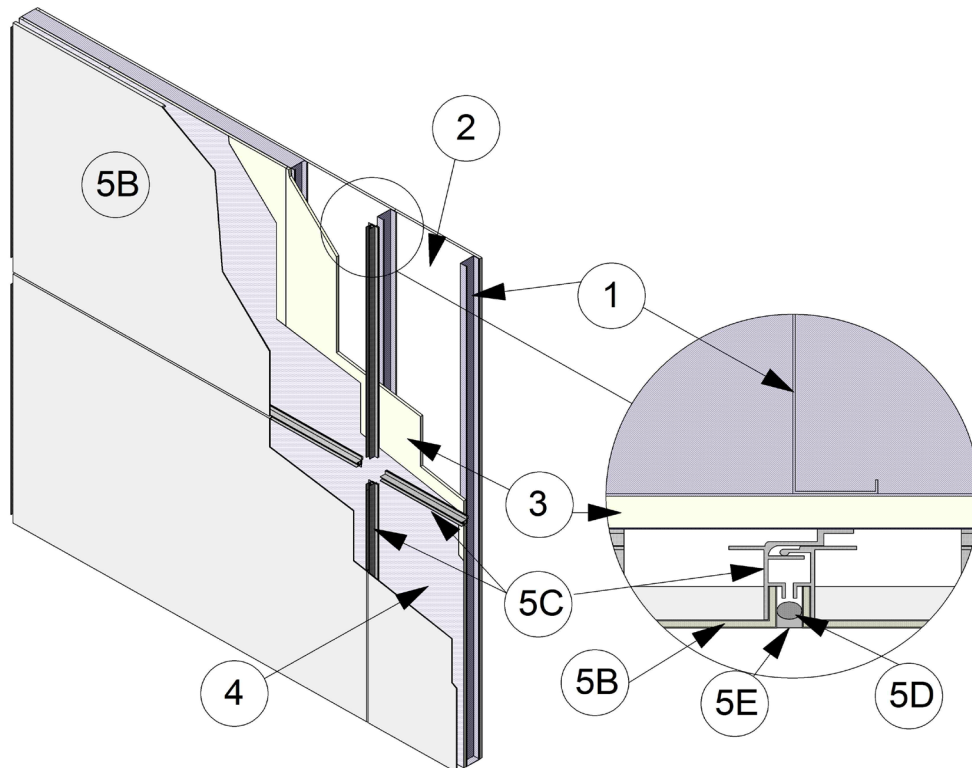


Alfred, LLC
Design No. UCL/MCMWP 30-01
Exterior Wall Systems
ALFLEX
NFPA 285
Rating: Meets Conditions of Acceptance



1. **STEEL FRAMING:** Install nominal 3-5/8 in. 20 GA steel studs spaced nominally 24 in. on center (oc). Attach steel studs to 20 GA top and bottom steel tracks using nominal 7/16 in. long pan-head framing screws attached to front and back of each steel stud. Nominal 1-1/2 in. x 1/2 in., 16 GA lateral bracing installed in the knockouts of the steel studs spaced 48 in. oc vertically up the wall. Nominal 4 in. thick, 4 pound per cubic foot (pcf) density mineral fiber insulation installed at the floor line for firestopping.
2. **INTERIOR GYPSUM:** Apply one layer of 5/8 in. thick, Type X gypsum board to the interior side

of the steel framing (Item 2) with the long dimension parallel to the steel studs. Secure using #6 1-1/4 in. long, Type S screws spaced nominally 8 in. oc around the perimeter and 12 in. oc in the field.

- A. **JOINT TAPE AND COMPOUND (Not Shown)** – Apply a level 2 finish of vinyl or casein, dry or premixed, joint compound applied in two coats to all exposed fastener heads and gypsum board joints. Embed min. 2 in. wide paper, plastic, or fiberglass tape in first layer of compound over joints in gypsum board (Item 3).



3. EXTERIOR SHEATHING: Install 5/8 in. thick DensGlass® Gold exterior sheathing to the exterior side of the steel framing (Item 2) with the long dimension perpendicular to the steel studs. Secure using #6 1-1/4 in. long, Type S screws spaced nominally 8 in. oc around the perimeter and 12 in. oc in the field.

4. WEATHER BARRIER: Install a single layer of DuPont™ Tyvek® vapor barrier to the exterior side of the exterior sheathing (Item 3) with min. 6 in. overlaps at the seams and attached with staples spaced 24 in. oc.

5. CERTIFIED MANUFACTURER: Alfrex, LLC

CERTIFIED PRODUCT: Aluminum Composite Panels

MODEL: ALFREX 4mm Panel

EXTERIOR VENEER: Install aluminum composite panels using the following elements:

A. **ALUMINUM ANGLES (Not Shown)** – Where applicable (such as opening for windows and wall perimeters) install "L" shaped aluminum angles secured through the exterior sheathing (Item 3) into the steel framing (Item 1). Secure aluminum composite panels (Item 5B) to aluminum angles using #12 x 3/4 in. long self-drilling screws spaced max. 24 in. oc.

B. **ALUMINUM COMPOSITE PANELS** – Secure aluminum composite panels to aluminum

extrusions (Item 5C) with #12 x 3/4 in. long self-drilling hex-head steel screws 24 in. oc. Where applicable secure aluminum composite panel to aluminum angles (Item 5A).

C. **ALUMINUM EXTRUSIONS** – Install aluminum extrusion to aluminum composite panels (Item 5B) prior to installation onto wall. Secure aluminum extrusion through the exterior sheathing (Item 3) into the steel framing (Item 1) using #12 x 1-1/2 in. long self-drilling TEK screws.

D. **BACKER ROD** – Install nominal 7/8 in. diameter foam backer rod compressed into joints between the aluminum composite panels (Item 5B). Install backer rod imbedded into the joint so that a min. 1/4 in. space is remaining between the backer rod and the exterior face of the aluminum composite panels (Item 5B).

E. **SEALANT** – Install a min. 1/4 in. thick bead of Dow Corning® 795 Silicone Building Sealant into joints between aluminum composite panels (Item 5B) over the backer rod. Sealant installed to be flush with the exterior surface of the aluminum composite panels (Item 5B).

6. FLASHING (Not Shown): Where applicable, min. 0.04 in. thick aluminum flashing shall be installed in openings spanning from the interior to the exterior side of the window opening.

Consult the listing report on the Directory of Building Products (<https://bpdirectory.intertek.com>) for the edition of the standard(s) evaluated.

Compliance of the assembly described in this Design Listing with the referenced standard relies on verification that the assembly constructed in the field is consistent with that described herein. Intertek certified products may be verified by the approved Intertek label; other products must be verified by the Authority Having Jurisdiction as meeting the specifications stated herein.