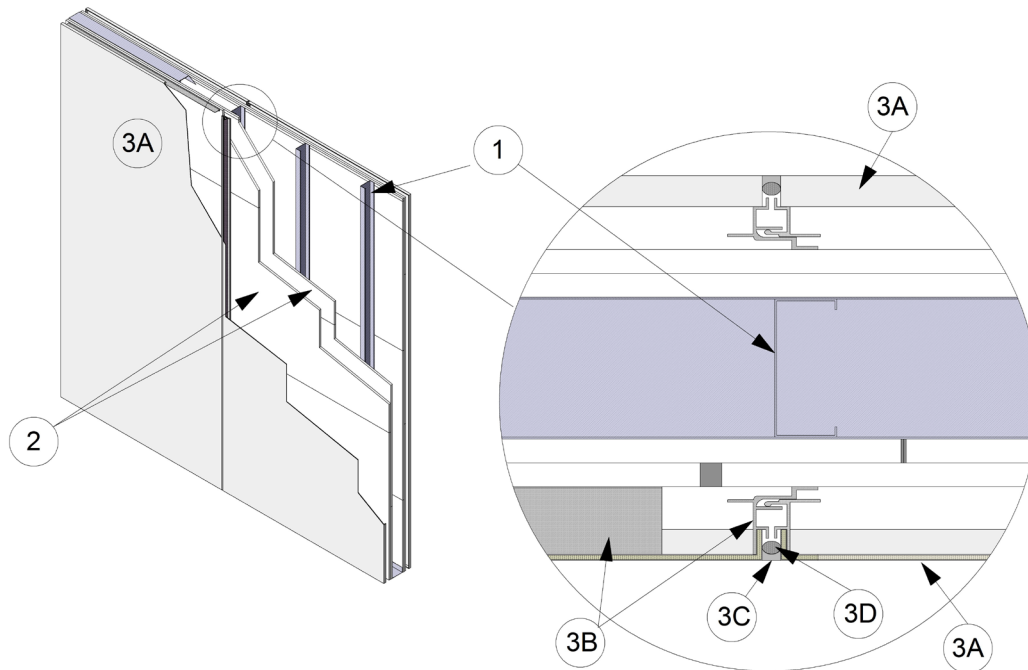

Alfrex, LLC
Design No. UCL/MCMWP 120-01
Non-Load Bearing Wall Assembly
ALFREX
ASTM E119
Rating: 2 Hour Fire Resistance



- 1. STEEL FRAMING:** Install nominal 2-1/2 in. 25 GA steel studs spaced nominally 24 in. on center (oc), friction fit into 25 GA top and bottom steel tracks. Studs cut to be nominal 1/4 in. shorter than wall height.
- 2. GYPSUM BOARD:** Apply two layers of 5/8 in. thick, Type X gypsum board to each side of the steel framing (Item 1) with the long dimension perpendicular to the steel studs. Secure base layer using #6 1-1/4 in. long, Type S screws spaced nominally 16 in. oc. Install face layer with joints offset min. 24 in. from the base layer joints. Secure face layer using #6 1-5/8 in. long, Type S screws spaced nominally 16 in. oc and offset 8 in. from the base layer screws.

- A. JOINT TAPE AND COMPOUND (Not Shown) –**
Apply a level 2 finish of vinyl or casein, dry or premixed, joint compound applied in two coats to all exposed fastener heads and gypsum board joints. Embed min. 2 in. wide paper, plastic, or fiberglass tape in first layer of compound over joints in gypsum board (Item 3).

3. CERTIFIED MANUFACTURER: Alfrex, LLC

CERTIFIED PRODUCT: Aluminum Composite Panels

MODEL: ALFREX 4mm Panel



EXTERIOR VENEER: Install aluminum composite panels using the following elements:

- A. ALUMINUM COMPOSITE PANELS – Secure aluminum composite panels to aluminum extrusions (Item 5B) with #12 x 3/4 in. long self-drilling hex-head steel screws 24 in. oc. Where applicable secure aluminum composite panel to aluminum angles (Item 5A).
- B. ALUMINUM EXTRUSIONS – Install aluminum extrusion to aluminum composite panels (Item 5A) prior to installation onto wall. Secure aluminum extrusion through the gypsum board (Item 2) into the steel framing (Item 1) using #12 x 3 in. long self-drilling TEK screws.
- C. BACKER ROD – Install nominal 7/8 in. diameter foam backer rod compressed into joints between the aluminum composite panels (Item 5B). Install backer rod imbedded into the joint so that a min. 1/4 in. space is remaining between the backer rod and the exterior face of the aluminum composite panels (Item 5B).
- D. SEALANT – Install a min. 1/4 in. thick bead of Dow Corning® 795 Silicone Building Sealant into joints between aluminum composite panels (Item 5B) over the backer rod. Sealant installed to be flush with the exterior surface of the aluminum composite panels (Item 5B).

Consult the listing report on the Directory of Building Products (<https://bpdirectory.intertek.com>) for the edition of the standard(s) evaluated.

Compliance of the assembly described in this Design Listing with the referenced standard relies on verification that the assembly constructed in the field is consistent with that described herein. Intertek certified products may be verified by the approved Intertek label; other products must be verified by the Authority Having Jurisdiction as meeting the specifications stated herein.