

Alfrex, Inc.
Design No. UCL/MCMWP 25-02
Exterior Wall Systems
4 mm Alfrex ACM Panels
CAN/ULC S134
Rating: Meets Conditions of Acceptance

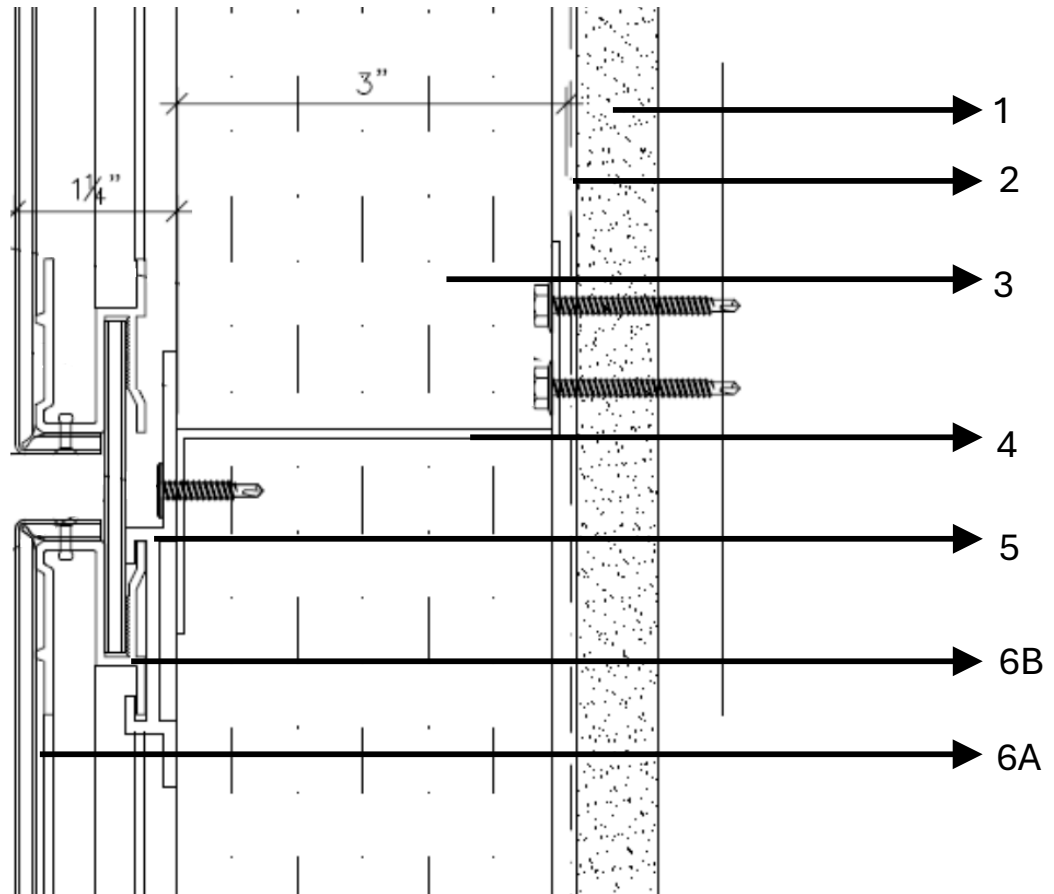


Figure 1 – Wall Assembly

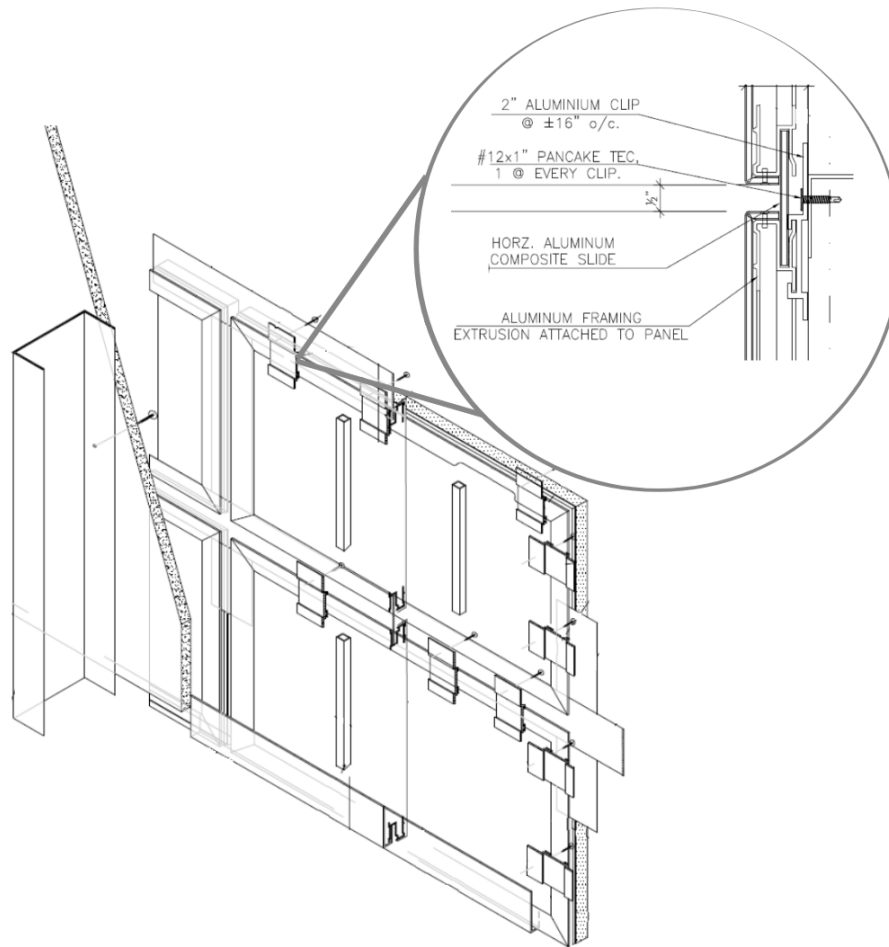


Figure 2 – ACM Attachment Details

- 1. SUPPORTING WALL CONSTRUCTION:** Install nominal 2 x 6 in. 20 GA galvanized steel studs spaced 24 in. on center (oc). Attach the steel framing to 20 GA top and bottom steel tracks using #8 x 1/2 in. long pan-head framing screws. Install 4 ft. x 8 ft. x 5/8 in. thick DensGlass® Gold Exterior Sheathing perpendicular to the studs. Sheathing is secured with #6 x 1-1/4 in. long self-drill zinc-plated screws spaced 8 in. at the joints and perimeter and 12 in. in the field.

INTERIOR SHEATHING (Not Shown): Install one layer of 4 ft. x 10 ft. x 1/2 in. thick, Type X gypsum board with the long dimension perpendicular to the studs.

Sheathing is fastened to the framing with #6 x 1/14 in. long self-drill zinc-plated screws spaced 8 in. at the joints and perimeter and 12 in. in the field.

- 2. WEATHER BARRIER:** Adhere a layer of VaproShield® WrapShield SA Self-Adhered Vapor Permeable Air Barrier oriented vertically.
- 3. INSULATION:** Install nominal 3 in. thick mineral wool insulation between the weather barrier and the ACM panels using 3 in. long insulation pins distributed one at each corner, and one in the middle of each 4 x 8 in. insulation board. The density of the insulation is 6.2 pcf.



4. **Z-GIRTS:** 3 x 3 x 3 in. 18 GA galvanized steel Z-girts installed horizontally at every horizontal panel joint and mid-span for panels over 48 in. in height. Z-girts are secured to the studs with #14 x 1-1/2 in. type “A” screws with two screws at each stud.
5. **WALL CLIPS:** Pre-install 2 in. x 3 in. aluminum wall clips to the top and left edge of each panel by clipping the wall clip into the pre-installed aluminum extrusion spacing the clips 24 in. oc.
6. **EXTERIOR CLADDING SYSTEM:**

CERTIFIED PRODUCT: 4mm Alfrex Aluminum Composite Panels – Installed with CMPS-CP Attachment System

Install the panels using the following Extrusion System components:
 - A. **COMPOSITE PANEL** – Secure the 4mm Alfrex ACM panels to the Z-girts by fastening the pre-installed clips to the Z-girts using #12 x 1 in. pancake tec fasteners with one fastener per clip. Install the next layer of panels by attaching the bottom profile of the pre-installed aluminum extrusion to the top mating edge of the wall clips. The panels are installed in a manner to leave a 1/2 in. reveal between panel edges, vertically and horizontally. An ACM spline is friction fitted into the gap.
 - B. **PRE-INSTALLED ALUMINUM EXTRUSIONS** – Aluminum extrusions are secured into the panel edge using countersink aluminum rivets along the perimeter of the panels.
7. **WINDOW OPENING (Not Shown):** Install 18 GA aluminum L-flashing spanning the wall thickness of 11 in. with a 2 in. vertical leg containing a 1/2 in. drip edge. Flashing is installed around the window opening sill, jambs, and header.

Consult the listing report on the Directory of Building Products (<https://bpdirectory.intertek.com>) for the edition of the standard(s) evaluated.

Compliance of the assembly described in this Design Listing with the referenced standard relies on verification that the assembly constructed in the field is consistent with that described herein. Intertek certified products may be verified by the approved Intertek label; other products must be verified by the Authority Having Jurisdiction as meeting the specifications stated herein.