

Alfred, Inc.
Design No. UCL/MCMWP 30-04
Exterior Wall Systems
4 mm Alfred ACM Panels
NFPA 285
Rating: Meets Conditions of Acceptance

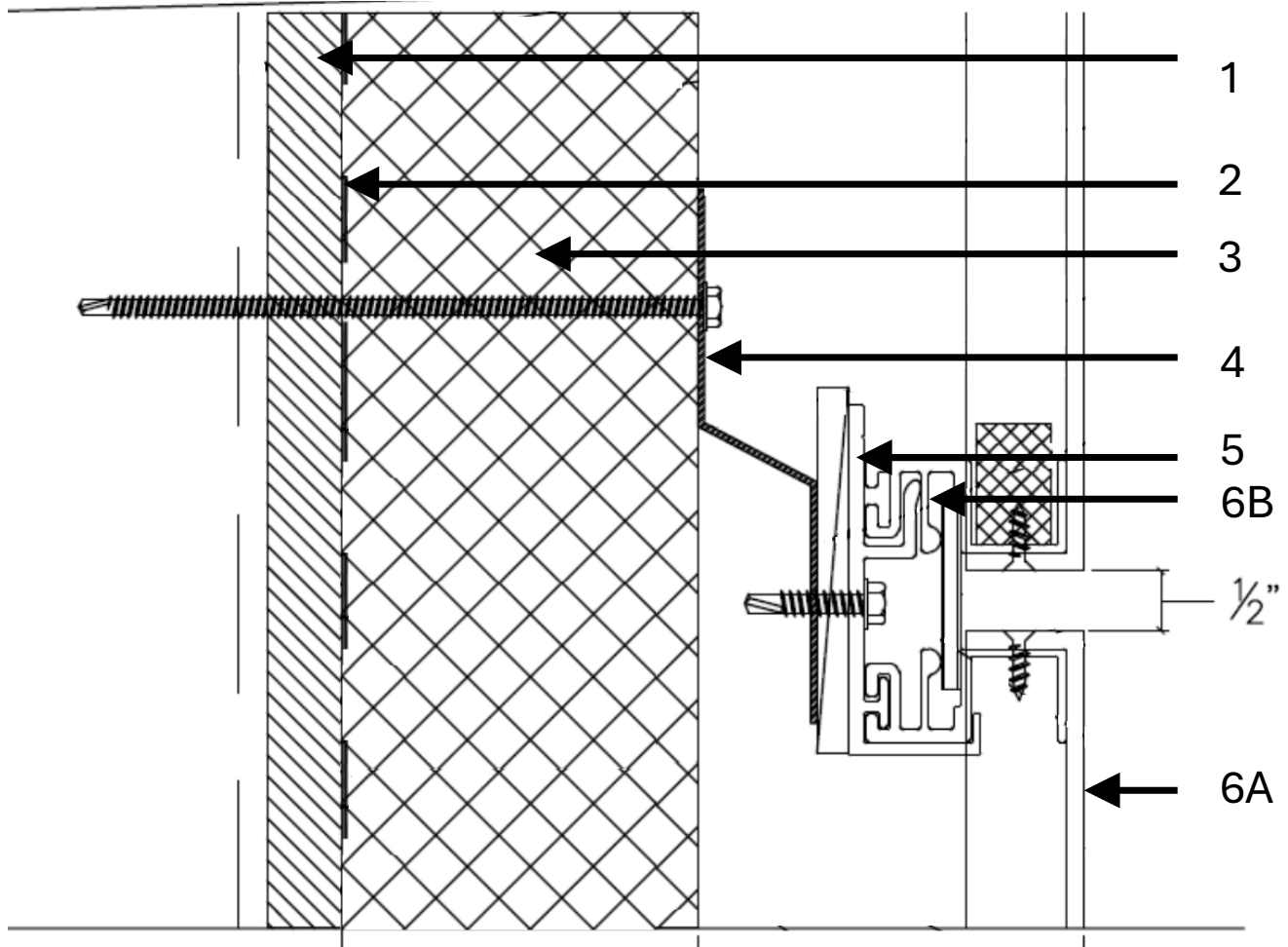


Figure 1 – Wall Assembly

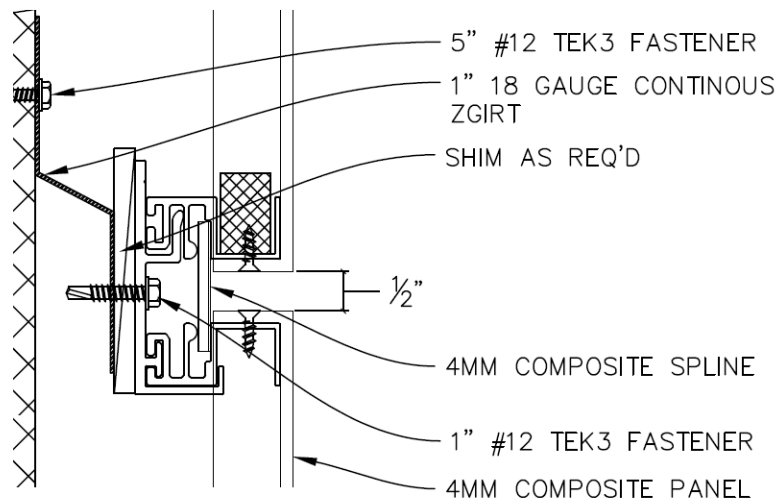


Figure 2 – ACM Attachment Details

- 1. SUPPORTING WALL CONSTRUCTION:** Install nominal 6 in. 18 GA steel studs spaced 24 in. on center (oc). Attach the steel framing to 18 GA top and bottom steel tracks using #6 x 1/2 in. long self-drilling screws. Install 4 ft. x 8 ft. x 5/8 in. thick DensGlass® Gold Exterior Sheathing perpendicular to the studs. Sheathing is secured with 1-5/8 in. long bugle-head self-tapping screws spaced 8 in. at the joints and perimeter and 12 in. in the field.

INTERIOR SHEATHING (Not Shown): Install one layer of 4 ft. x 10 ft. x 5/8 in. thick, Type X gypsum board with the long dimension perpendicular to the studs. Sheathing is fastened to the framing with 1-5/8 in. long bugle-head self-tapping screws spaced 8 in. at the joints and perimeter and 12 in. in the field.

- 2. WEATHER BARRIER:** Apply a layer of VaproShield® Reveal Shield SA™ Self-Adhered Vapor Permeable Air Barrier oriented horizontally.

- 3. INSULATION:** Install nominal 3 in. thick Dupont Thermax™ Sheathing Polyiso Insulation panels between the weather barrier and the ACM panels. Secure the insulation using 5 in. long #12 Tek 3 fasteners and plastic washers spaced at 24 in. oc in the field.
- 4. Z-GIRTS:** 1 in. tall 18 GA galvanized steel Z-girts installed horizontally. Z-girts are spaced nominal 24 in. oc. Z-girts are secured with 5 in. long #12 Tek 3 fasteners.
- 5. WALL CLIPS:** Install 2 in. x 3 in. aluminum wall clips to the Z-girts using #12 x 1-1/4 in. self-drilling fasteners. Clips are installed to align with the top corners of each panel. Clips are installed using optional shims to level the exterior surface. Max. panel width is 83-1/4 in. Clips are provided by the manufacturer with the ACM system.



6. EXTERIOR CLADDING SYSTEM:

CERTIFIED PRODUCT: 4mm Alfrex Aluminum Composite Panels – Installed with Accu-Trac DS Rainscreen System

Install the panels using the following Extrusion System components:

- A. COMPOSITE PANEL – Secure the 4mm Alfrex ACM panels to the wall clips spaced through the pre-installed aluminum extrusion at the corner of each panel.

The panels are installed in a manner to leave a 1/2 in. gap between panel edges, vertically and horizontally.

- B. PRE-INSTALLED ALUMINUM EXTRUSIONS – Aluminum extrusions are riveted into the panel on each corner using #8 x 3/4 in. countersunk screws along the perimeter of the panels.

- 7. **WINDOW OPENING (Not Shown):** Install 18 GA aluminum closure trim around the perimeter of the window opening.

Consult the listing report on the Directory of Building Products (<https://bpdirectory.intertek.com>) for the edition of the standard(s) evaluated.

Compliance of the assembly described in this Design Listing with the referenced standard relies on verification that the assembly constructed in the field is consistent with that described herein. Intertek certified products may be verified by the approved Intertek label; other products must be verified by the Authority Having Jurisdiction as meeting the specifications stated herein.