

Alfred, Inc.
Design No. UCL/MCMWP 30-03
Exterior Wall Systems
4 mm Alfred ACM Panels
NFPA 285
Rating: Meets Conditions of Acceptance

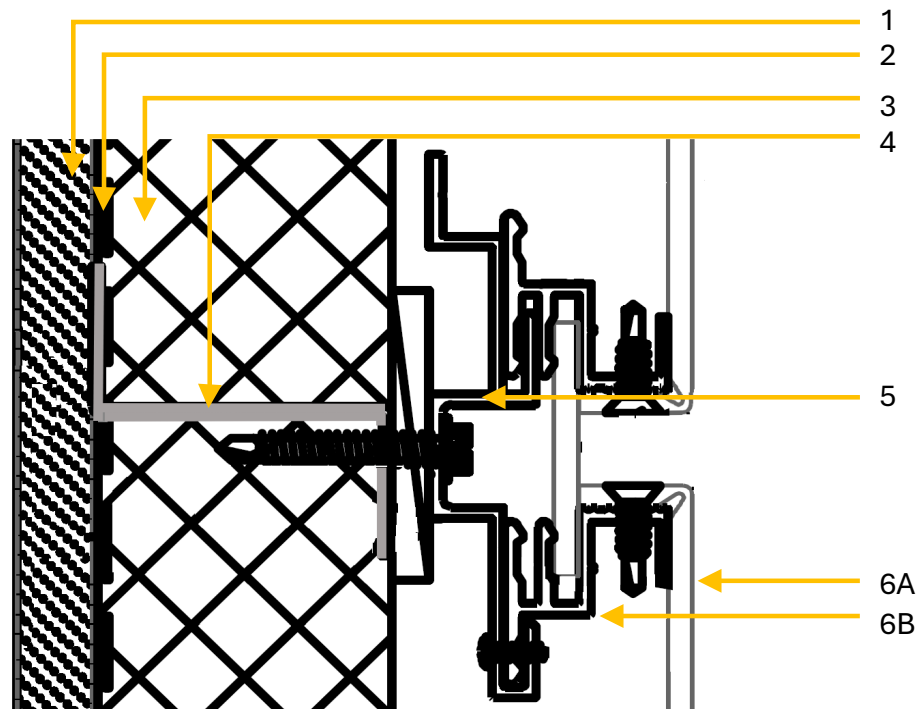


Figure 1 – Wall Assembly

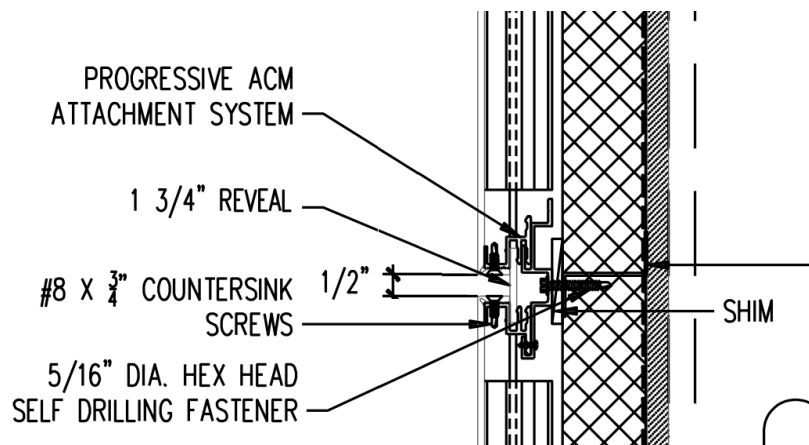


Figure 2 – ACM Attachment Details



1. **SUPPORTING WALL CONSTRUCTION:** Install nominal 2 x 6 in. 20 GA galvanized steel studs spaced 24 in. on center (oc). Attach the steel framing to 20 GA top and bottom steel tracks using #8 x 1/2 in. long pan-head framing screws. Install 4 ft. x 8 ft. x 5/8 in. thick DensGlass® Gold Exterior Sheathing perpendicular to the studs. Sheathing is secured with #6 x 1-1/4 in. long self-drill zinc-plated screws spaced 8 in. at the joints and perimeter and 12 in. in the field.

INTERIOR SHEATHING (Not Shown): Install one layer of 4 ft. x 10 ft. x 5/8 in. thick, Type X gypsum board with the long dimension perpendicular to the studs. Sheathing is fastened to the framing with #6 x 1/4 in. long self-drill zinc-plated screws spaced 8 in. at the joints and perimeter and 12 in. in the field.

2. **WEATHER BARRIER:** Apply a layer of VaproShield® WrapShield SA Self-Adhered Vapor Permeable Air Barrier oriented horizontally. Staple the seams at 24 in. oc spacing.
3. **INSULATION:** Install nominal 3 in. thick mineral wool insulation between the weather barrier and the ACM panels. The insulation is friction fitted between the Z-girts. The density of the insulation is 6.2 pcf.
4. **Z-GIRTS:** 3 in. wide 18 GA galvanized steel Z-girts installed horizontally. Z-girts are spaced nominal 24 in. oc. Z-girts are secured to the studs with 2-1/4 in. long, 5/16 in. diameter hex-head self-drilling screws spaced 24 in. oc.
5. **WALL CLIPS:** Pre-install 2 in. x 3 in. aluminum wall clips to the perimeter of the top edge of each

panel using 2-1/4 in. long, 5/16 in. diameter, hex drilling fasteners per clip. Clips are spaced at 24 in. oc around the perimeter of the panel. Clips are provided by the manufacturer with the ACM system.

6. EXTERIOR CLADDING SYSTEM:

CERTIFIED PRODUCT: 4mm Alfrex Aluminum Composite Panels – Installed with Progressive ACM Attachment System

Install the panels using the following Extrusion System components:

- A. **COMPOSITE PANEL** – Secure the 4mm Alfrex ACM panels to the z-girts by fastening the pre-installed clips to the Z-girts using 2-1/4 in. long, 5/16 in. diameter, hex drilling fasteners. Install the next layer of panels by attaching the bottom profile of the pre-installed aluminum extrusion to the top mating edge of the wall clips. The panels are installed in a manner to leave a 1-3/4 in. reveal between panel edges, vertically and horizontally. An ACM spline is friction fitted into the gap.
 - B. **PRE-INSTALLED ALUMINUM EXTRUSIONS** – Aluminum extrusions are secured into the panel edge using #8 x 3/4 in. countersink screws along the perimeter of the panels.
7. **WINDOW OPENING (Not Shown):** Install 18 GA aluminum L-flashing spanning the wall thickness of 11-1/4 in. with a 2 in. return on the interior side of the wall. Flashing is installed around the window opening sill, jambs, and header.

Consult the listing report on the Directory of Building Products (<https://bpdirectory.intertek.com>) for the edition of the standard(s) evaluated.

Compliance of the assembly described in this Design Listing with the referenced standard relies on verification that the assembly constructed in the field is consistent with that described herein. Intertek certified products may be verified by the approved Intertek label; other products must be verified by the Authority Having Jurisdiction as meeting the specifications stated herein.