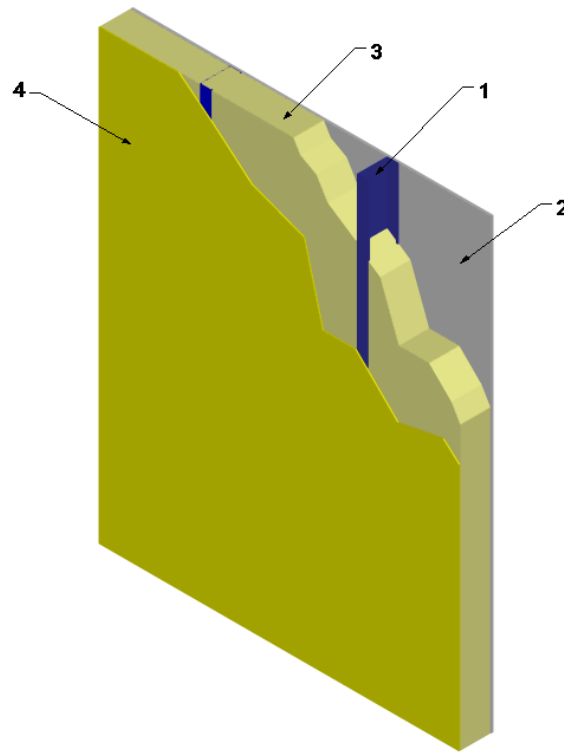


---

**Amrize Building Envelope LLC (Enverge)**  
**Design No. ABE/FI 30-03**  
**Non-Load Bearing Wall System**  
**Enverge ProFill FR6500R**  
**NFPA 285**  
**Rating: Meets Conditions of Acceptance**

---



- 1. WALL FRAMING:** Install 3-5/8 in. deep, 20 GA galvanized steel studs spaced max. 24 in. on center (oc). Secure steel studs to 3-5/8 in. 20 GA top and bottom track (not shown) using #8, 1/2 in. long, self-tapping, pan-head framing screws.

OPTIONAL – Install nominal 2 x 4 fire-retardant treated wood studs, complying with the definition and requirements prescribed in the International Building Code. Studs shall be spaced max. 16 in. oc.

- 2. GYPSUM BOARD:** Install 5/8 in. thick Type X gypsum board, installed with long dimension

perpendicular to studs (Item 1). Attach to steel studs (Item 1) using #6, Type S, 1-1/4 in. long, self-tapping, bugle-head screws. Attach to wood studs (Item 1) using #6, 1-5/8 in. long, coarse thread, bugle-head screws, or use #13, 1-5/8 in. drywall nails.

Fasteners for fire-retardant treated wood studs shall be of hot-dipped zinc-coated galvanized steel, stainless steel, silicon bronze, or copper.

Space fasteners 8 in. oc around perimeter and 12 in. oc in the field.



**Division 07 – Thermal and Moisture Protection**  
**07 21 00 Thermal Insulation**  
**07 21 19 Foamed-In-Place Insulation**

**3. INSULATION:**

**CERTIFIED PRODUCT:** Enverge ProFill FR6500R  
Spray Polyurethane Foam Insulation

Spray-apply a nominal 3-5/8 in. thick layer of Enverge ProFill FR6500R at a nominal density of 0.55 pcf, to completely fill the steel stud (Item 1) cavity.

- 4. EXTERIOR SHEATHING:** Install 5/8 in. thick, GP DensGlass® Gold Exterior Sheathing to the exterior side of studs (Item 1). Install sheathing with long dimension perpendicular to steel studs using #6, Type S, 1-1/4 in. long self-tapping, bugle-head screws.

Attach to wood studs (Item 1) using #6, 1-5/8 in. long, coarse thread, bugle-head screws, or use #13, 1-5/8 in. drywall nails.

Fasteners for fire-retardant treated wood studs shall be of hot-dipped zinc-coated galvanized steel, stainless steel, silicon bronze, or copper.

Space fasteners 8 in. oc around perimeter and 12 in. oc in the field.

- 5. OPENINGS:** (Not Shown) Openings must be protected with 20 GA steel framing.
- 6. FLOORLINE FIRESTOPPING:** (Not Shown) Install 4.0 in. thick, 4.0 pcf mineral wool in the stud cavity at the floor lines.

*Consult the listing report on the Directory of Building Products (<https://bpdirectory.intertek.com>) for the edition of the standard(s) evaluated.*

*Compliance of the assembly described in this Design Listing with the referenced standard relies on verification that the assembly constructed in the field is consistent with that described herein. Intertek certified products may be verified by the approved Intertek label; other products must be verified by the Authority Having Jurisdiction as meeting the specifications stated herein.*